



2015 CALL FOR CANDIDATES

NCHEC is searching for individuals to fill voluntary positions on our Board of Commissioners and Division Boards. The terms of these positions will begin on January 1, 2015. NCHEC seeks individuals from a variety of practice settings on all boards: school, medical care, business/industry, academia and community. Elections will be held in August 2014. Consider nominating yourself or encouraging a peer to take this opportunity.

Board of Commissioners (BOC): One At-Large Commissioner: 5-year term. The Board of Commissioners is comprised of 11 individuals who govern and are accountable for all NCHEC activities. More specifically, the BOC defines the mission, participates in strategic planning, approves the annual budget and monitors financial statements, employs and evaluates the Executive Director, oversees and evaluates the credentialing programs, establishes policies related to coordination and communication among the three division boards, and advocates for credentialing. Significant experience in health education, interest or familiarity with the functioning of non-profit boards, and knowledge and interest in health education credentialing is preferred.

Division Board for Professional Development (DBPD): Two Directors: 5-year terms and One Director: 4-year term. The DBPD is comprised of seven individuals responsible for oversight of the recertification and annual renewal procedures. More specifically, the DBPD recommends policies and procedures related to the designation of continuing education providers, recertification and the annual renewal of CHES/MCHES; recommends fees for recertification, annual renewal and provider designation; and assures that the processes are monitored and periodically evaluated. Interest or experience in the development or delivery of continuing education programs for health educators is preferred.

Division Board for Certification of Health Education Specialists (DBCHEs): One Director: 5-year term. The DBCHEs is comprised of 11 individuals responsible for the credentialing examination. More specifically, the DBCHEs assures a periodic review and evaluation of certification and examination processes; recommends policies and procedures for administering the CHES

and the MCHES examinations; participates in item-writing workshops and on-going online item-writing assignments, and ensures that NCHEC's testing meets acceptable standards. Interest or experience in item-writing and exam construction is preferred. The MCHES credential is required to serve on this Division Board.

Division Board for Professional Preparation and Practice (DBPPP): Two Directors: 5-year terms. The DBPPP is comprised of seven individuals responsible for promoting professional preparation. More specifically, the DBPPP works with colleges, universities and accrediting agencies to improve professional preparation programs and promote best practices in health education settings, and monitors and updates the certification application and eligibility review process. Interest or experience with the credentialing process and with professional preparation is preferred.

Requirements for all positions include:

- Maintaining CHES/MCHES certification (Note: DBCHEs Directors must be MCHES)
- Participating in monthly conference calls
- Attending one face-to-face meeting (all expenses paid by NCHEC) per year – typically this meeting spans a weekend (Thursday night – Sunday noon). DBCHEs may require two face-to-face meetings per year
- Reading agendas, minutes and other documents and information to stay informed
- Exercising independent judgment on decisions presented and maintaining confidentiality
- Advocating for credentialing
- Working on specific assignments/projects of the Board
- Supporting the work and mission of NCHEC, protecting confidentiality, and avoiding conflict of interest

If you are interested in becoming a candidate, please contact Melissa Rehrig at: 888-624-3248 ext. 11 or mrehrig@nchech.org or visit the Web site at www.nchech.org. **Nomination deadline is June 15, 2014.**

inside this issue



2 Leadership News
Milestone: 25 Years
of Certification

3 MCHES Recertification
4 City of Hope Employs
Health Education
Specialists

8 Fall 2013 CHES
9 CHES High Scorers
10 New MCHES and
MCHES High Scorer



Message from the NCHEC Board of Commissioners Chair — Deborah A. Fortune, PhD, MCHES



Greetings! We begin the 2014 year with a new Board of Commissioners (BOC) with some returning and some newly elected Commissioners. Thank you for the opportunity to serve as the chair of the BOC for 2014. As I reflected on my career as a health education specialist, it occurred to me that this is a wonderful time for the health education professional. The Affordable Care Act (ACA) provides many opportunities for health education specialists.

The Society for Public Health Education (SOPHE) clearly outlined future opportunities for health education and the roles of health education specialists in ACA in the document entitled *Affordable Care Act: Opportunities and Challenges for Health Education Specialists* (2013). NCHEC's role in the ACA is to continue to promote and maintain a credentialed body of health education specialists.

Recently, NCHEC received the "gold stamp" of approval by the National Commission for Certifying Agencies (NCCA) for the two health education certifications (CHES & MCHES). This national recognition indicates that our certification process is of high quality and rigor. What does this approval mean for the health education

specialists who are CHES or MCHES? Individuals who are certified by NCHEC have the professional preparation (knowledge and skills) to function as high quality professionals in the health education field.

The BOC's priorities for 2014 include the following:

Strategic Plan: The BOC will spend a significant amount of time this year to develop the goals and objectives for the next five years in order for NCHEC to remain the premier credentialing organization for health education.

HESPA: Health Education Specialist Practice Analysis Project is underway. The purpose of the project is to revalidate the contemporary practice of entry-level and advanced-level health education specialists. An additional purpose is to re-define the core knowledge and competencies for health education practice. All health education specialists, credentialed and non-credentialed, were encouraged to complete the survey. The results of the study will be used to update the *Framework for Health Education Specialists*. This project is jointly sponsored by NCHEC and SOPHE.

I look forward to working with the BOC on these important initiatives in order to continue to strengthen the health education profession and our credentialing organization (NCHEC).

A Milestone: 25 Years of Certification of the Profession

Written by: NCHEC Executive Director, Linda Lysoby, MS, CAE, MCHES



This year, the National Commission for Health Education Credentialing, Inc (NCHEC) is celebrating the 25th anniversary of the CHES credential. The mission of NCHEC is to enhance the professional practice of Health Education by promoting and sustaining a credentialed body of Health Education Specialists. To meet this mission, NCHEC certifies health education specialists, promotes professional development, and strengthens profes-

sional preparation and practice. Our charge is to develop and administer a national competency-based examination; develop standards for professional preparation; and promote professional development through continuing education for health education professionals.

NCHEC was founded in 1988 and conferred the first Certified Health Education Specialists (CHES) in 1989. The Master Certified Health Education Specialist (MCHES) was added in

2011. Now both the CHES and MCHES exams are offered twice a year at more than 120 testing locations nationwide. There are currently more than 10,200 CHES and 1,025 MCHES active certified individuals. The organization has evolved into a non-profit agency that has a governing body of 11 Commissioners, three division boards, an Executive Director plus six full time office staff.

The NCHEC boards and staff have worked diligently to ensure that the CHES and MCHES credentials meet certification industry standards. In 2013, the National Commission for Certifying Agencies (NCCA) granted re-accreditation to the nationally recognized CHES certification for a five-year period. Also, the advanced-level certification, MCHES earned accreditation in its first time of review. The re-accreditation and accreditation were awarded to NCHEC for demonstrating compliance with the NCCA Standards for the Accreditation of Certification Programs. NCCA accreditation provides assurance to the public and other stakeholders that NCHEC's examinations as well as policies and procedures are in compliance with high national standards.



continued on page 3

A Milestone *continued from page 2*

Representatives of NCHEC have contributed to the creation and refinement of a competency-based framework for health education professionals to identify related areas of responsibility in their practice. This standardization has contributed to setting broad practice standards and can be used for curriculum development, evaluation of continuing education programs and performance measurement. In an effort to define the work of health education specialists, the 4th major project is currently underway to identify the competencies of health education specialists. The first was the Role Delineation Study (1980s), then the Competencies Update Project (CUP) (1998-2004), followed by the Health Educator Job Analysis (HEJA) (2008-2009). In partnership with the Society for Public Health Education (SOPHE), work is currently underway in the Health Education Specialist Practice Analysis (HESPA). HESPA will further validate the contemporary practice of entry- and advanced-level health education specialists and further shape the blueprint for their credentialing, professional preparation and professional development. Drs. Jim McKenzie and Dixie Dennis are co-chairs of the 12 member

Task Force that began meeting in 2013. HESPA data will be collected and analyzed in 2014 and the results released in 2015. It is anticipated that the results will paint a portrait of what a health educator does in practice that has been verified by scientific study.

From the NCHEC experience, the lesson learned is to apply standards consistently, update competencies regularly, and set and enforce the minimum pass score. All of these things combine to make the certification a true quality standard. By doing so we help employers and the public to recognize, understand and ultimately seek out the expertise of those who have earned the certification. Periodically analyzing the role of the health educator/health education specialist in practice and incorporating the Areas of Responsibility, Competencies, and Sub-competencies into academic programs, certification examinations, and continuing education opportunities help to further define and promote the profession of health education.



If you became MCHES through the Experience Documentation Opportunity you are due to recertify March 31, 2016. Since the MCHES certification is new, this is a reminder of the recertification requirements.

After initial certification, each MCHES must earn a total of 75 Continuing Education Contact Hours (CECH) every five years to be recertified. At least 45 of these CECH must come from offerings by NCHEC preapproved designated providers (Category I); the remaining 30 CECH may come from other providers (Category II). MCHES may choose to earn all 75 CECH in Category I. As a reminder, MCHES are required to earn 30 CECH that are directly related to the advanced-level Sub-competencies from Category I and/or II for each certification cycle. Category I CECH opportunities are listed on the NCHEC Web site at <http://www.nchec.org/ce/procal/>.

MCHES may earn all of their 30 advanced-level credits through category II. Work-related activities, events or experiences that relate to the advanced-level Sub-competencies may count toward Category II credits. Please refer to the Continuing Education Contact Hours (CECH) opportunities listed in the Policies and Procedures Handbook for accepted activities on the NCHEC Web site at: http://www.nchec.org/_files/_items/nch-mr-tab7-80/docs/policy%20procedure%20handbook%20accepted%20changes%205-20-13.pdf

MCHES who are unable to meet the recertification requirement may request extension status. MCHES who previously were active CHES, and who cannot maintain the advanced certification, can revert back to the CHES level if they have met all requirements for the CHES certification.

Thank you for your commitment to the Health Education Profession by being nationally certified. Please feel free to contact me at mschmell@nchec.org should you have any questions regarding continuing education or recertification.



City of Hope Benefits from Employment of Health Education Specialists

Written by: Annette Mercurio, MPH, MCHES, Director of Programs, Department of Supportive Care Medicine; City of Hope, Duarte, CA



City of Hope benefits enormously from employment of health education specialists, who are equipped to excel at a broad range of responsibilities. Health education specialists' versatility enables the organization to stretch labor dollars. Health education specialists contribute in myriad ways to cost-reduction. For example, we help patients and caregivers learn to effectively manage side effects of treatment, thus preventing unscheduled readmissions while reducing suffering. As emphasis within health care organizations on outcome measurement continues to grow, health education specialists play an increasingly vital role in focusing organizational resources on programs with the greatest impact on cost and quality.

Three health education specialists are employed within City of Hope's Department of Supportive Care Medicine. Their experience in health education ranges from four to thirty-two years.

Each health education specialist has demanding and varied job responsibilities and each makes major contributions to strategic priorities of the organization and department. Examples of position responsibilities are:

- Lead strategic planning for patient and family education
- Oversee institution's community benefit program
- Develop educational programs for specific patient and caregiver populations
- Develop culturally appropriate patient and family education materials
- Help physicians and staff learn how to effectively educate patients with low literacy skills
- Facilitate patient and family education classes
- Administer patient and family services (patient navigation, Child Life, patient and family education, the Patient and Family Advisory Council)
- Serve as department's fiscal administrator
- Develop evaluation tools and processes
- Lead interdisciplinary project teams

The CHES/MCHES credential is required for employment in our health education specialist positions.

City of Hope supports maintenance of certification by paying for membership in organizations such as SOPHE and the Cancer Patient Education Network (CPEN). In addition, we fund attendance at one to two national conferences per year as well as participation in on-line continuing education offerings.

City of Hope was founded in 1913 through grass-root action in response to an individual and public health tragedy. Earlier that year, a young tailor with tuberculosis who was unable to pay for medical care died on a Los Angeles sidewalk. Concerned volunteers established City of Hope in Duarte, CA, as a sanatorium to provide free care to tuberculosis patients. In 1949, with the widespread use of vaccines for tuberculosis, the hospital broadened its focus to curing cancer, diabetes, and other life-threatening diseases. Today, City of Hope's mission is to transform healthcare and turn scientific discoveries into practical benefits for patients through state-of-the-art medical care, research into better therapies for disease, and education programs that train the next generation of scientists. City of Hope is one of only 41 Comprehensive Cancer Centers in the nation, as designated by the National Cancer Institute.

Patients with a life-threatening illness require not only exceptional medical care, but also assistance in coping with the emotional, spiritual, and psychological impact of disease. City of Hope is recognized as a national leader in supportive care medicine, with one of the largest and most comprehensive programs in the country. The Department of Supportive Care Medicine offers an array of services to alleviate suffering and improve the quality of life for patients and their family members. The department's Patient, Family and Community Education Division is critical to helping patients and caregivers actively engage in their care and experience the best possible outcomes.

Conference Schedule

Mark your calendars for opportunities to earn continuing education contact hours. For more information on these conferences, visit the organizations' Web site.

Organization	Details	Dates	Location
American College Health Meeting (ACHA)	www.acha.org	May 27-31, 2014	San Antonio, Texas
National Association of County & City Health Officials (NACCHO)	www.naccho.org	July 9-11, 2014	Atlanta, Georgia
88th Annual American School Health Association (ASHA)	www.ashaweb.org	October 9-11, 2014	Portland, Oregon
APHA 142nd Annual Meeting & Exposition	www.apha.org	November 15-19 2014	New Orleans, Louisiana

Tell a colleague or student that the **2014 CHES AND MCHES EXAM DATES** are **April 26th** and **October 18th**

APRIL 2014						
Sun	Mon	Tues	Wed	Thu	Fri	Sat
		1	2	3	4	5
6	7	8	9	10	11	12
13	14	15	16	17	18	19
20	21	22	23	24	25	26
27	28	29	30			

For more information, visit www.nchec.org or contact the Exam Coordinator: **888-624-3248, ext 12**

OCTOBER 2014						
Sun	Mon	Tues	Wed	Thu	Fri	Sat
			1	2	3	4
5	6	7	8	9	10	11
12	13	14	15	16	17	18
19	20	21	22	23	24	25
26	27	28	29	30	31	

NCHEC WELCOMES NEW CHES – FALL 2013

The following is a list of those who earned the distinct title of Certified Health Education Specialist (CHES) in the October 2013 examination. NCHEC welcomes them to a class of more than 10,200 active CHES. Those who opted not to be published are excluded from the list.

Hailey M Adamek	Holly B Bill	Aisha N Cody	Megan A Eaves
Brittany R Adams	Natasha C Blakeney	Allyson Cohen	Melissa Edmiston
Christen N Adams	Evelyn I Bledsoe	Karen S Colliflower	Atim C Effiong
Ophelia A Addai Boateng	Alyssa Blondon	Renyea Colvin	Jenna E Eichelberger
Gueorgui Agasandyan	Christopher D Bowden	Chelsea A Considine	Catherine N Ekeleme
Jayzona A Alberto	Lisa Bowers	Samantha E Cook	Karlyn G Emile
Nahed M Ali	Karlana M Brailey	Lindsey R Cooke	Lydia L Erb
Carlton M Allen	Gabriela H Breitfeller	Robin Cooley	Alejandro Espinoza
Kristi M Allen	Emily S Breitner	Brittani Coore	Jill Estes
Thamara Alshehri	Caitlin Bridges	Jeffrey D Cordell	Jennifer-June N Evanilla
Lia A Amanios	Miranda Brothers	Arlene Cornejo	Jennifer Evans
Morgan Ames	Tiffany J Brown	Terri Corsi	Monroe G Evans Jr.
Christine Anasco	Cameron M Brownlee	Latonia Coryatt	Alexandra R Everett
Andrew C Anderson	Adrienne B Bryant	Katherine L Cranston	Kristen Y Feaga
Katelin M Anderson	Edward L Buckalew	Aubrey G Culp	Shelby Feldman
Cynthia Anorue	Evelynn Xuan A Bui	Meghan Cunningham	Andrew M Ferguson
Francesca A Antinoro	Sondrina L Bullitt	Grace R Dadios	Charles N Ferrusi
Laura K Arch	Tanya L Bunce	Jill D Dalgarno	Julie Field
Raquel B Arias	Jean H Bunch	Gloria J Dalle Poulos	Elizabeth M Fischer
Ushta Aryan	Jared T Bunde	Lucy S Danso-Odei	Roshanthi A Fisher
Anu Asnani	Julie A Burger	Briana D Davis	Colleen Fitzgibbons
Leah Atwell	Amanda J Burke	Megan J Davis	Lynn D Fletcher
Kara Autrey	Kelly M Burton	Kimberly A Day	Jennifer R Flickinger
Barbara J Baggett	Jan Butin	Solly E Daza	Crystal L Flowers
April Bailey	Elena S Butoiu	Laura J DeCelles	Tabitha D Flowers
Emily S Bajko	Michelle N Butts	Emily M Deitch	Ashley N Flynn
Sarah J Baker	Daniel Calder	Dorothy Delphin	Betty S Foh
Olulana G Bamiro	Alexandra E Capece	Dequetta A Devine	Kirsty A Fontaine
Nicholle Bankston	Jody L Carman	Aicha M Diallo	Kathryn Fortman
Amanda M Barfknecht	Allyse M Carr	Karolyn C Diamond-Jones	Keri A Foster
Kristin E Barklund	Kelly W Carrico	Jamie Diersing	Emily R Fowle
Shelby L Barnes	Stephen B Carroll Jr	James E Diggs Jr.	Amy Frandsen
Lauren A Bartsch	Debbie J Caruth	Tanya M Dillard	Stacy M Furness
Angela G Basham	Jane Case	Kimber Dillon	Kristin Fyfe
Cynthia M Bass-Thomas	Alicia Casey	Hena N Din	Heather Gake
Matthew D Bauer	Molly C Cashion	Victoria Do	Sophia E Garcia
Emily Baughman	Kinsey J Cason	Katherine E Doane	Susan S Gay
Angela W Baumann	Cristina Castaneda	Shelby E Dock	Angela H Gerlach
Ashlie L Bausley	Amanda Cernovich	Lauren A Dolinski	Robert T Gobble
Franklin J Becerra	Kristin Champlain	Nicole L Donaldson	Monica Godfrey
Rachele V Beeman	Bounphone Chanthavong	Sarah L Doughty	Shauna R Goldberg
Kristy Behen	Miralda Charles	Nadege I Dubuisson	Emily A Golias
Nicholas J Beresic	Maria A Chaves	Sarah A Duesterhaus	Elisa E Gordon-Douglas
Kara E Berg	Ezinne J Chinemere	Alexandra Duff	Jennifer Gottshall
Brittany R Bernard	Danielle Cinnante	Salina A Duggan	Kimaya S Grant
Alicia L Best	Katheryn M Cipriani	Meghan Duncan	Kimberly R Graves
Tara Bevivino	Adrienne Clark	Kiernan M Dunn	Shena M Gray
Navjot K Bhullar	Emily E Clark	Kaitlin Dwyer	Yolette A Gray
Jennifer Biden	Kelly Clay	Christine Dziembowski	

continued

NCHEC WELCOMES NEW CHES – FALL 2013

Cynthia R Green	Leah D Irby	Bethan C Lamb	Jeanie McGee
Rebecca E Green	Hope L Ivory	Shelby L Lamb	Tabetha J McGill
Erin Griffiths	Christina M Iyengar	Natasha Lambert	Paige C McGowan
Natalie E Grinvalds	Mildred L Jackson	Alison K Lambo	Amy J McKee
Jennifer Groom	Irma V Jaime	Kurt J Lance	Monica P McKenzie
Philip D Groom	Avril L James-Hurt	Jennifer M Langston	Maya R Mcknight
Janet E Grund	Sara E Jerabek	Kylie Lanman	Emily D Meadows
Stephanie M Guetig	Amy L Johnson	Sarah E Larson	Melanie J Mease
Evy M Haan	Brittney D Johnson	Elizabeth P Laubach	Jennifer Mekhail
Lesia A Hahn	Chelsea N Johnson	Merril L Lavezzo	Rachel A Mendelson
Erin B Hall	Cynthia E Johnson	Michelle V Leander-Griffith	Elyssa Mendoza
Jennifer M Hansen	Dominique D Johnson	MPH	Ann M Mergel
Lakisha D Harris	Latoya D Johnson	Cevadne Lee	Sharon B Middleton
Philip A Harris	Rachel Johnson	Ka Man Lee	Emily Miller
Ross Harris	Sarah K Johnson	Jane C Lee Choe	Emily M Mirza
Summer S Harris	Shobal Johnson	Rosetta A Leonard	Katrina A Mock
Amelia T Hayward	Bethann F Jones	Amy LeTourneau	Shawnessy L Mohawk
Lauren D Helms	Brittany N Jones	Marie Lewis	Krystal L Moon
Seth A Henderson	Deborah Jones	Kiley Lisk	Luis E Morales
Theresa V Henderson	Kristin N Jones	Debbie Liu	Robin Morehouse
Justin Henry	Kristina F Jones	Litonya S Livingston	Courtney E Moreland
Kevina Henry	Rebecca M Jones	Vivian D Lockstead	Christine Morley
Tanya Hewitt	Holly J Joseph	Cherilyn A Lootens	Selena M Morresi
Leisha Hibbett	Kimberly Jow	Charlaine V Loriston	Susan Morrison
Korie A Hickel	Sunita Kadel	Amanda E Lovekamp	Courtney M Moser
Shawn Hickey-Higgins	Irfan Kakezai	Tesha T Lucas	Megan A Moskal
Trevor K Higgins	Johanna G Kalin	Sarah L Lundli	Robert L Moulds Jr
Paula E Hilbert	Dorothy M Kalmon	Elizabeth D Lyda	Taylor L Murillo
Julie K Hinson	Suzanne L Karimi-Decheshme	Jordan E Lyerly	Sophie L Murphy
Ai-Chen (Jane) Ho	Rachel A Keefer	Jessica A Mabalot	Brittani Murray
Kristen S Hodavance	Caitlin J Keenan	Katie MacDonald	Carmen Murray
Seth Hofmann	Sarah D Kelley	Nora Maher	Elizabeth A Murray
Kelly F Holtz	Annette M Kennedy	Wendy Mahugu	Sarah E Napolitano
Rosemarie Horne	Denise Kenny	Christopher J Mailey	Caitlin V Neal
Sara L Horner	Jennifer L Kessler	Angela Malone	Grace N Neequaye
Ian M Horvat	Ashley N Kienitz	Pamela A Manning	Jessica K Nevitt
Emma R Hosman	Angelique Kilby	Serina Mars	Quynh J Nguyen
Kimberly J Houk	Andrea L Kimura	Sarah M Martin	Ann K Nichols
James E Houston III	Rachel E King	Elena A Martinez	Hanan Nourhussein
Megan Howard	Caroline Kingori	Lizette Martinez	Nancy R Nycum
Jo A Howd	Peder Kjerstad	Christina C Mason	Alma G Ochoa
Melissa R Howell	Brendan D Klein	Jessica H Mathes	Sarnia Ogidan
Shawna L Howell	Jacqueline Y Knight	Meredith May	Olatomiwa Ogunsola
Jessica M Huffman	Allison B Knox-Westmeyer	Sydney L Mayes	Diana M Orquiola
Annette M Huffstead	Desirae E Kraft	Gregory A Mayo	Anabel Orquiz
Kara R Hughes	Amanda M Krentz	Marrielle Mayshack	Edgardo J Ortiz-Sánchez
Christina M Humphreys	Trista L Krone	Christian O Mbulu	Tiffany A Osterhout
William R Hutchison	Allison M Kuchar	Kayla McClaran	Nicole L Ostoyich
Janice Iglesias	Kelsey A Kuhlman	Eric M McClure	Britni N Overall
Stephanie S Ikegbunam	Radhika Kumar	Madelynn R McCormick	Kelsi Owens
Taylor Ipock	Tanya M Laguna	Virginia M McCuen	

continued

NCHEC WELCOMES NEW CHES – FALL 2013

April Pagliassotti	Crystall Robinson	Daniel Sowards	Broyny D Vitatoe
Laura L Palisin	Monica X Rocha	Kelley A Spelman	Lori A Viveros
Allison M Palmer	Melissa Rockett	Kathy M Spencer	Molly Vlach
Nimish S Paripatyadar	Kayla Roeske	Meagan E Stabler	Elizabeth F Waldron
Ellen C Parkhurst	India D Rose	Amy Lynn Stahlberg Tinkler	Jennifer Walters
Jaime L Parton	Nicholle Rosemond	Elizabeth Steffer	Alix D Warren
Bansari Patel	Sarah R Rosenblum	Karen Stewart	Caroline Warren
Rachel L Patrick	Erika S Rosenfried	Cathy J Stiller	Kimberly M Warren
Tonika Paul	Kayla L Rother	Betria D Stinson	Rosie M Washington
Jun Payne	Lauren N Rush	Melissa E Stites	Kiara W Watson
Shelly R Peacock	Megan M Rush	Kimberly D Stone	Devon N Wayne
Sara M Pellegrini	Alyssa M Ruud	Annslee G Stovall	Ashley A Weber
Emily M Pera	Tamara Y Sacchini	Julie Straw	Maria D Welch
Emily B Perkins	Erin T Salisbury	Kapra A Stuffelbeam	Ta'Kindra Westbrook
Danielle D Perry	Alexandra K Sampson	Jennifer L Sullivan	Mary S Wheeler
Jamie A Peters	Ifeanyi E Samuel	Nickolas J Sumpter	Alexandra White
Danica J Peterson	Maricely Sanchez	Edwin Sunico	Samantha R Whiteside
Reshana P Peterson	Harveen Sandhu	Tenille K Surratt	Lucy Wille
Jacqueline B Phillips	Cynthia Sandstrom	Anne Sutkowi	Rhonda K Williams
Kati N Phillips	Adela R Santana	Courtney R Swanson	Laneatria Willis
Joann Phung	Jillian Savino	Emily Tachon	Reginald L Willis
Darcy Pickens	Shelly Scamardo	Mary Talley	Lisa F Wilson
Jennifer L Pittman	Nicole C Schaub	Jane Tardivo	Megan K Wise
Alisha Polite	Kiera C Schminke	Leah Tasman	Alicia B Wodika
Jennifer M Ponce	Keelin Schneider	Arny Grace A Tesnado	Chrissy M Wolniewicz
Bobbie J Porter	Jodi K Schofield	Lauren T Thompson	Ava C Wong
Michele Porter	Tessa M Schwake	Robbie Thompson	Tessa R Woods
Emily R Potocki	Stephanie Schwermin	Jessica M Thorne	Katherine Wooten
Wendy J Potratz	Kelsey M Seligmann	Shailja Tiku	Ainsley A Worrell
Hannah M Priest	Ciara Sentelik	Tracy T Tilghman	Sophia C Wozny
Kristen G Provencher	Frances D Sernulka-George	Pamela J Tinc	Jessica A Wright
Kacey S Puckett	Mayra Serrano	Emily C Tinga	John Wunderlich
Ali Rahman	Callie L Settle	Elizabeth D Torres	Sarah Yorence
Tahira M Randhawa	Jordan A Shagina	Jennifer Torres	Denise N Young
Kim A Rantanen-Day	Shikha Shah	Megan Tortorelli	Zainab A Yusuf-Sada
Ivan E Rayner III	Allie L Shepard	Julie A Traynor	Robyn Zettl
Jasmine J Reid	Jewel G Shepherd	Brittany A Trentham	Kinda Zureick
Sharon A Reid-Jackson	Stephanie L Shoul	Sara Trivette	
Kaitlin Reinert	Adam T Sibley	Katie Tse	
Heidi B Reiter	Kristy A Sillay	Carrie L Tucker	
Beth J Renick	Sarah E Simmons	Tiffany J Tucker	
Patricia P Reyhan	Permjeet Kaur D Singh	Joy E Umogbai	
Colleen Rice	Allison M Smith	Jacqueline A Urban	
Jennifer M Richards	Christina N Smith	Barbara Usack	
Haley Riegel	Christopher K Smith	Lynne R VanDerhoof	
Jennifer Rigby	Natasha S Smith	Craig VanKempen	
Karen Ripke	Kelly E Smyth	Marrissa Vaughn	
Connor J Rittwage	Kelly A Soper	Duane W Vecera	
Rachel A Rizzo	Janeva Sorenson	Bailey Vernon	
Brandi L Roberts	Maribel Soria	Martinetta Victorian	
Alexandra Robinson	Vanessa Soto	Angelica N Vidrio	

HIGH SCORERS ON THE OCTOBER 2013 CHES EXAM

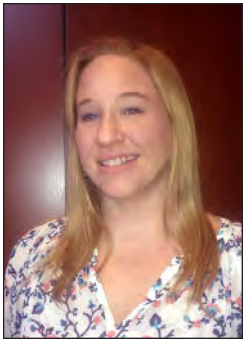


Raquel Arias, MPH, CHES

Raquel Arias is currently a State Health Systems Account Representative with the American Cancer Society in Los Angeles, CA. She developed a passion for health and wellness while in college, after completing a community health course and an internship aimed at encouraging healthy habits in at-risk youth. Raquel spent several years working in program support and training for the American Cancer Society's patient and caregiver service programs. She graduated from the UCLA MPH

for Health Professionals program in September 2012. The program emphasized health promotion and health education, and through that experience she became increasingly interested in primary and secondary prevention and access to care issues. Now she is working to engage health plans and state agencies in initiatives to prevent cancer, detect it early, and improve quality of life for cancer patients and their families.

"I decided to take the CHES exam because I wanted a way to demonstrate my commitment to health education and to my own professional development. With the MPH and CHES designation I feel I am part of a special team of individuals committed to achieving health equity and healthy communities."



Sarah Jackson, MPH, CHES

Sarah currently serves as Project Manager on a grant at the University of North Carolina at Chapel Hill's School of Nursing. Her work involves partnering with community-based aging service providers to implement an evidence-based depression management program designed to detect and manage depression in at-risk older adults. She works individually with aging service organizations, their staff, and mental health professionals to prepare them for program adoption through pre-implementation assistance and intensive program training.

Ensuring program fidelity and sustainability, as well as conducting aspects of program evaluation are central to her work on the grant. Sarah earned her bachelor's degree in sociology with a minor in psychology from the University of North Carolina at Greensboro and a master's degree in Public Health with a concentration in Health Education from the University of South Florida. Although relatively new in her role, Sarah is excited for the experience this work will bring and is committed to working with communities to promote health and wellbeing for vulnerable populations.

"After a couple of years finishing the MPH program and gaining experience in the field, I decided it was time to make a more formal commitment to the Health Education profession. The cost of the exam was an initial barrier for me after graduation but, through work funding, I was able to take the exam. More employers are seeking individuals with certification, so remaining competitive in the work force as well as staying abreast of current issues, evidence and practices in health education and promotion were important reasons for taking the exam."



Caitlin Neal, MPH, CPH, CHES

Caitlin V. Neal is a sexual health professional who recently completed her MPH at Indiana University. Originally hailing from Detroit, Caitlin is interested in health promotion with LGBTQ youth and locating new and unique spaces (such as nightclubs) for sexual health intervention with her organization LightsOn Health. Caitlin currently lives in Indianapolis,

Indiana where she works at the Indiana Public Health Association, teaches, writes, and occasionally DJs. Her vision is a world in which public health means sexual health rights and reproductive freedom for all. She took the CHES exam because she wanted to strengthen the foundation for her work in education and intervention design and because she plans to pursue a DrPH in community health.



Darcy Pickens, MPH, CHES

When Darcy Pickens graduated from San Francisco State University in 2007 with a B.S. in Health Education, she had had long since recognized her passion for public health, and had already begun her career in health education, with the Boys and Girls Clubs of San Francisco, working with the city's youth on health issues ranging from nutrition to healthy relationships.

After transitioning to California's Central Valley in 2010, she began work as Development Director for a local community based organization serving people with disabilities, and received an American Humanics certificate in Nonprofit Leadership and Administration from California State University, Fresno. In August of 2013, Darcy graduated from San Jose State University with her MPH, and is currently working with the Maternal Child and Adolescent Health (MCAH) division of Tulare County Health and Human Services, where she focuses on evaluation and community assessment for MCAH programs. Darcy believes each and every one of us has the capacity to impact social justice and community wellness through our daily actions, and strives to live in a way that is healthiest for her and her family as well as the planet.

"I decided to take the CHES exam because I feel it provides an objective measurement of my skills as a health education professional, as well as being an expression of my commitment to the field. The certification also broadens the horizons of health education professionals; as a CHES/MCHES one is connected to a diverse array of professional development opportunities, networking forums, and potential career paths that may otherwise be overlooked."

NCHEC WELCOMES NEW MCHES – FALL 2013

The following is a list of those who earned the distinct title of Master Certified Health Education Specialist (MCHES) in the October 2013 examination. NCHEC welcomes them to a class of more than 1,025 active MCHES. Those who opted not to be published are excluded from the list.

Dareen Abdrabou
Carmen Ashley
Nicole M Augustine
Rosalie Barretta
Sara G Bates
Alicia L Battle
Kristin B Behler
Sheila D Bogan
Vanessa L Booth
Cynthia D Borel
Melissa C Butcher
Emily Chance
Brittany E Clarke

Lauren R Dorsett
Lisa M Duke
Jody Early
Brandon M Eggleston
Suzanne K Forkner
Megan L Freedman
Stacy M Gerow
Laura M Gonzalez
Rosa Emma González
Christie L Green
Donna M Harris
Michelle H Heyman
Mary Theresa Hoban

Elizabeth Inglis
Diana Karczmarczyk
Heather M Ladanyi
Sara S Lasker
Maurice W Martin
Geoffrey B Miller
Teri Nikolai Wilson
Eburn O Odeneye
Wendy A O'Donnell
Erin K O'Neill
Reuben Parrish
Ruth P Pereira
Calandra J Portalatin

Kandice J Porter
Darson L Rhodes
Beth M Schweitzer
Victoria Serna Garcia
Tara K Spann
Jessica J Stansell
Mary K Swanson
Linda M Tholstrup
Nigel M Thomas
Katie R Viehmann-Wical
Tanas R Wilcox
Mekia L Winder
Sharlene V Yearwood

HIGH SCORER ON THE FALL 2013 MCHES EXAM



Megan Lewis Freedman, MCHES

Megan is a content manager and strategist for CommunicateHealth, Inc., a health education and communication firm specializing in improving health literacy through user-centered design, research, and content development. She supports the Office of Disease Prevention and Health Promotion in managing the development, maintenance, and sub-

ject matter review for health topics on the award-winning site healthfinder.gov. Megan also writes, edits, and evaluates plain language print and web content.

Megan has over 15 years of experience in public health, and has worked on issues ranging from violence prevention to environmental health. She earned a Bachelor's degree in Psychology from the University of New Hampshire and a master's degree in Health Studies from the University of Alabama.

"I chose to take the MCHES exam because the certification helps establish credibility and consistency within our diverse field. The continuing education requirement will also help me stay current with innovations and best practices."



Deborah Fortune, BOC chair with NCHEC staff Cynthia Kusorgbor and Tanya Cole at the 2013 APHA meeting in Boston.



NCHEC's Linda Lysoby was announced as the 2014 Institute for Credentialing Excellence (ICE) Board of Director's Chair. Pictured with Linda is ICE Executive Director, Denise Rosendaal.



NCHEC NEWS

CREDENTIALING EXCELLENCE IN HEALTH EDUCATION



National Commission for Health Education Credentialing, Inc.

Credentialing Excellence in Health Education

National Commission for Health Education Credentialing, Inc.

1541 Alta Drive, Suite 303
Whitehall, PA 18052

Phone: (888) 624-3248

Fax: (800) 813-0727

Web site: www.nchec.org

NONPROFIT ORG
U.S. Postage PAID
Permit No. 274
Lehigh Valley, PA

SOCIAL NETWORKING SITE



Like us on Facebook, CHES Certified Health Education Specialists



Join our LinkedIn group – the Official NCHEC CHES/MCHES group

NCHEC STAFF

Executive Director

Linda Lysoby, MS, MCHES, CAE
llysoby@nchec.org • ext. 13

Deputy Executive Director

The NCHEC News / Web site Inquiries
Melissa Rehrig, MPH, MCHES
mrehrig@nchec.org • ext. 11

Credentialing Project Specialist

MCHES Exam / Eligibility Inquiries
Cynthia Kusorgbor, MPH, CHES
ckusorgbor@nchec.org • ext. 16

Continuing Education Coordinator

Continuing Education / Provider /
Recertification / Change of Status Inquiries
Melissa Schmill
mschmill@nchec.org • ext. 14

Exam Coordinator/ Office Manager

CHES Exam / Eligibility Inquiries
Tanya Cole
tcole@nchec.org • ext. 12

Financial Coordinator

Renewal / Accounts Payable Inquiries
Lisa Petrone
lpetrone@nchec.org • ext. 15

Administrative Coordinator

Contact Information Inquiries
Laura Swift
lswift@nchec.org • ext. 10

BOARD OF COMMISSIONERS

Executive Officers 2014

Deborah Fortune, PhD, MCHES (Chair, At-large)	2010-2014
Christine Abarca, MPH, MCHES (Vice-chair, DBCHEs Coordinator)	2013-2014
Kellie Flannery, MPH, CHES (Secretary, At-large)	2011-2015
Nancy Clifton-Hawkins, MPH, MCHES (Treasurer, At-large)	2013-2017
Stephen Gambecchia, PhD, MEd, MBA, MCHES (Immediate Past Chair)	2011-2014

Commissioners

Dixie Dennis, PhD, MCHES, FAAHE (At-large)	2014-2018
Ellen Edmonds, MS, PhD, MCHES (DBPPP)	2012-2014
Dianne Kerr, MA, MEd, PhD, MCHES (DBCHEs)	2014-2015
Michael McNeil, MS, EdD, MCHES (DBPPP)	2014-2015
Erin Reiney, MPH, CHES (DBPD)	2014-2015
Nicolette Warren (DBPD)	2014-2015
Larry Williams (Public Member)	2014-2016

Division Board for Certification of Health Education Specialists

Christine Abarca, MPH, MCHES (Coordinator)
Dianne Kerr, MA, MEd, PhD, MCHES (Vice-Coord.)
James F. McKenzie, MEd, PhD, MPH, MCHES
David Brown, MA, EdD, MCHES
Jill Clutter, PhD, MCHES
Brian Gordon, MA, PhD, MCHES
Amy S. Hedman, PhD, MCHES
Shana Pack-Gangluff, MS, MCHES
Manoj Sharma, MS, DTD, PhD, MCHES
Laura Talbott, PhD, MCHES
Melody Yarbrough Knight, PhD, RN, MCHES

Division Board for Professional Preparation and Practice

Michael McNeil, MS, EdD, CHES (Coordinator)
Ellen Edmonds, MS, PhD, MCHES (Vice Coordinator)
Gwyndolyn Ashcom, MPH, MCHES
Miguel Perez, PhD., MS, BA, MCHES
Janice Clark, EdD, MS, BA, MCHES
Chris Eisenbarth, PhD, MCHES
Kerry Redican, PhD, CHES

Division Board for Professional Development

Erin Reiney, MPH, CHES (Coordinator)
Nicolette Warren, MS, MCHES (Vice-Coordinator)
Chesley Cheatham, M.Ed, BS, MCHES
Shannon Cox-Kelley, EdD, MCHES
Nicole Lindsey, MPH, BS, MCHES
Julie Luht, MPH, MCHES
Jennifer Taylor, MPH, MCHES

Editorial Board

Editor – Melissa Rehrig, MPH, MCHES, NCHEC

Copy Editors – Laura Swift, Cynthia Kusorgbor, MPH, CHES

Emily Tyler, MPH, RHed, CHES (Ret), Former NCHEC Commissioner