

# NCHEC CERTIFICATIONS: THE GOLD STANDARD



Finding the best and the brightest health education specialists for your team is challenging. You need motivated professionals with proven knowledge and skills to help your team measure up in a changing healthcare environment.



*Build a better team: hire CHES® or MCHES®*

CHES® and MCHES® are

- ❖ Independent critical thinkers
- ❖ Competent on the job
- ❖ Up-to-date in knowledge and expertise
- ❖ Committed to the profession

*“We find that CHES® prepared educators are well-rounded and they bring a different perspective to program design and information delivery. In the health education space, this is an important credential that we value.”*

Terrina Thomas, Director of Community Health and Prevention - Sentara Healthcare

*Nearly 90% of certified professionals feel that their CHES® or MCHES® designation shows a strong commitment to their industry and fulfills a sense of personal achievement.*

**Make the investment in your employees today by encouraging the CHES® and MCHES® certification.**



You will see a return on this investment in the form of knowledge, cutting-edge skills and the very best the industry has to offer.



Visit [www.nche.org](http://www.nche.org) and learn more about how certification simply builds a better team.



LinkedIn



YouTube



Credentialing Excellence in Health Education and Promotion



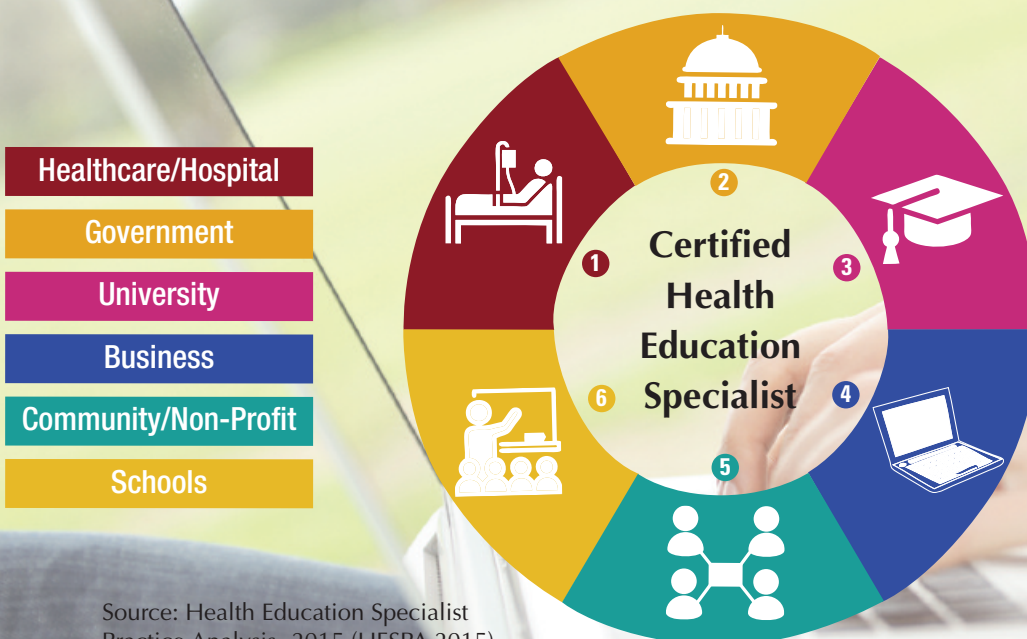
The CHES® and MCHES® certifications create a national and international standard for specialists practicing at both entry and advanced levels.

	CHES®	MCHES®
Designed for individuals in the early stages of their career	★	
Designed for experienced specialists with at least 5 years of experience		★
Exam content validated through comprehensive research	★	★
Designed for health education specialists responsible for developing and managing budgets, and applying ethical principles		★
Designed for health education specialists responsible for identifying staff development and training needs		★
Designed for health education specialists who select participants and deliver training	★	★
Designed for health education specialists who develop and monitor strategic plans		★
Designed for health education specialists who identify existing data collection instruments for program evaluation	★	★

**CHES®:** Exam content covers the *Seven Areas of Responsibility for Health Education Specialists* essential to the entry-level practice and delivery of health education and promotion.

**MCHES®:** Focuses on advanced skills to demonstrate leadership roles. Specifically, the MCHES® credential is hierarchical, meaning that MCHES® are competent in all entry-level (CHES®) skills, in addition to more advanced-level skills.

## Job Settings for CHES® and MCHES®



*“The CHES® credential is a requirement for all health education positions since 2006.”*

N. Harris-Hollingsworth,  
Montefiore Health System

*“CHES® is the gold standard that is recognized across the board.”*

A. Johnson,  
Kaiser Permanente

Source: Health Education Specialist Practice Analysis- 2015 (HESPA 2015)

Visit [www.nchec.org](http://www.nchec.org) for more information.