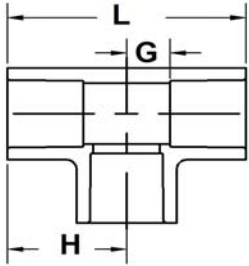


# CTS - CPVC

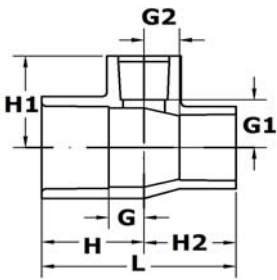
## CPVC Copper Tube Size Fittings

# CTS - CPVC

## Minimum Dimension Given

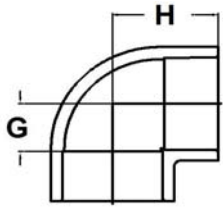


Tee				
Part No	Size (in)	L	H	G
4101-005	½	1 3/4	7/8	3/8
4101-007	¾	2 7/16	1 3/16	1/2
4101-010	1	3 1/16	1 9/16	5/8
4101-012	1¼	3 11/16	1 7/8	3/4
4101-015	1½	4 3/8	2 3/16	7/8
4101-020	2	5 11/16	2 13/16	1 1/8



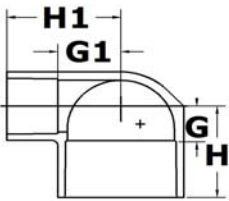
Reducer Tee									
Part No	Size (in)	L	H	H1	H2	G	G1	G2	
4101-074*	½ X ½ X ¾	2 9/16	1 5/16	1 3/16	*	13/16	1/2	*	
4101-094	¾ X ½ X ½	2 1/4	1 11/16	1	1	3/8	1/2	1/2	
4101-095*	¾ X ½ X ¾	2 1/2	1 3/16	1 3/16	1 5/16	1/2	1/2	13/16	
4101-101	¾ X ¾ X ½	2 3/16	1 1/16	1	*	3/8	1/2	*	
4101-102*	¾ X ¾ X 1	3 1/4	1 5/8	1 9/16	*	15/16	5/8	*	
4101-120*	1 X ½ X ½	3 3/16	1 1/2	1 5/8	1 5/8	5/8	1 1/8	1 1/8	
4101-121*	1 X ½ X ¾	3 3/16	1 1/2	1 5/8	1 5/8	5/8	15/16	1 1/8	
4101-122*	1 X ½ X 1	3 3/16	1 1/2	1 2/3	1 5/8	5/8	3/4	1 1/8	
4101-124*	1 X ¾ X ½	3 3/16	1 1/2	1 5/8	1 5/8	5/8	1 1/8	15/16	
4101-125*	1 X ¾ X ¾	3 3/16	1 1/2	1 5/8	1 5/8	5/8	15/16	15/16	
4101-126*	1 X ¾ X 1	3 3/16	1 1/2	1 5/8	1 5/8	5/8	3/4	15/16	
4101-130*	1 X 1 X ½	3 1/16	1 7/16	1 5/8	1 5/8	1/2	1 1/8	12/16	
4101-131*	1 X 1 X ¾	3 1/16	1 9/16	2	1 1/2	5/8	15/16	5/8	
4101-158*	1¼ X 1 X 1	3 13/16	1 7/8	2	2	3/4	1 1/16	1 1/16	
4101-166*	1¼ X 1¼ X ½	3 3/4	1 7/8	2	1 7/8	3/4	1 1/2	3/4	
4101-167*	1¼ X 1¼ X ¾	3 3/4	1 7/8	2	1 7/8	3/4	1 5/16	3/4	
4101-168*	1¼ X 1¼ X 1	3 3/4	1 7/8	2	1 7/8	3/4	1 1/16	3/4	
4101-195*	1½ X 1 X 1	4 1/2	2 3/16	2 5/16	2 5/16	7/8	1 7/16	1 7/16	
4101-209*	1½ X 1½ X ½	4 3/8	2 3/16	2 5/16	2 3/16	7/8	1 13/16	7/8	
4101-210*	1½ X 1½ X ¾	4 3/8	2 3/16	2 5/16	2 3/16	7/8	1 5/8	7/8	
4101-211*	1½ X 1½ X 1	4 3/8	2 3/16	2 5/16	2 3/16	7/8	1 7/16	7/8	
4101-247*	2 X 2 X ½	5 11/16	2 13/16	3	2 13/16	1 1/8	2 1/2	1 1/8	
4101-248*	2 X 2 X ¾	5 11/16	2 13/16	3	2 13/16	1 1/8	2 5/16	1 1/8	
4101-249*	2 X 2 X 1	5 11/16	2 13/16	3	2 13/16	1 1/8	2 2/16	1 1/8	
4101-251*	2 X 2 X 1½	5 11/16	2 13/16	3	2 13/16	1 1/8	1 3/4	1 1/8	

\*Fabricated



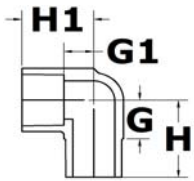
### 90° Elbow

Part No	Size (in)	H	G
4106-005	½	7/8	3/8
4106-007	¾	1 3/16	1/2
4106-010	1	1 1/2	5/8
4106-012	1¼	1 7/8	3/4
4106-015	1½	2 3/16	7/8
4106-020	2	2 13/16	1 1/8



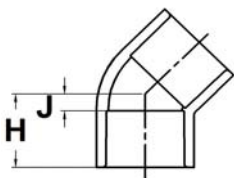
### 90° Elbow-Reducer

Part No	Size (in)	H	H1	G	G1
4106-101	¾ X ½	1 1/16	1	3/8	1/2



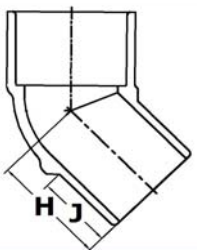
### 90° Street Elbow

Part No	Size (in)	H	H1	G	G1
4109-005	½	15/16	7/8	7/16	3/8
4109-007	¾	1 5/16	1 3/16	9/16	1/2
4109-010	1	1 5/8	1 9/16	11/16	5/8



### 45° Elbow

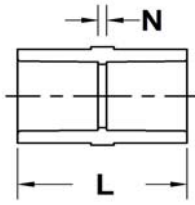
Part No	Size (in)	H	J
4117-005	½	11/16	3/16
4117-007	¾	1	1/4
4117-010	1	1 3/16	1/4
4117-012	1¼	1 7/16	5/16
4117-015	1½	1 11/16	3/8
4117-020	2	2 3/16	1/2



### 45° Street Elbow

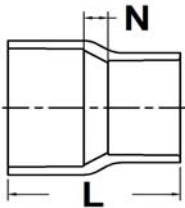
Part No	Size (in)	H	J
4127-005	½	13/16	5/16
4127-007	¾	1 1/16	5/16
4127-010	1	1 5/16	7/16

H & J are dimensions related to the spigot



### Coupling

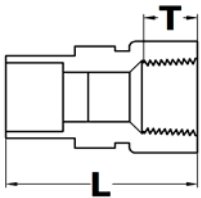
Part No	Size (in)	L	N
4129-005	½	1 1/8	1/8
4129-007	¾	1 1/2	1/8
4129-010	1	1 15/16	1/8
4129-012	1¼	2 5/16	1/8
4129-015	1½	2 11/16	1/8
4129-020	2	3 1/2	1/8



### Reducer Coupling

Part No	Size (in)	L	N
4129-101	¾ X ½	1 5/16	1/8
4129-131	1 X ¾	1 11/16	1/8
4129-168*	1¼ X 1	2 7/16	7/16

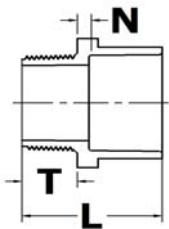
\*Fabricated



### Threaded Female Adapter - Stainless Steel\*

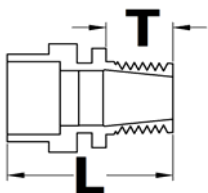
Part No	Size (in)	L	T
4135-005SS	½	1 11/16	5/8
4135-007SS	¾	1 15/16	5/8
4135-010SS	1	2 3/8	3/4

\*304 Stainless Steel is galvanically compatible with Brass and Copper in potable water plumbing systems



### Male Adapter

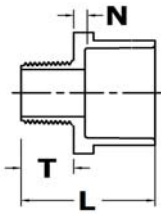
Part No	Size (in)	L	N	T
4136-005	½	1 5/16	3/16	5/8
4136-007	¾	1 1/2	3/16	5/8
4136-010	1	1 7/8	3/16	13/16
4136-012	1¼	2 1/16	3/16	13/16
4136-015	1½	2 3/8	1/4	7/8
4136-020	2	2 7/8	5/16	7/8



### Threaded Male Adapter - Stainless Steel\*

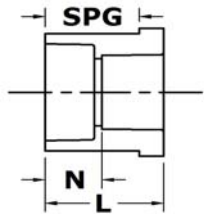
Part No	Size (in)	L	T
4136-005SS	½	2	11/16
4136-007SS	¾	2 5/16	11/16
4136-010SS	1	2 7/8	1

\*304 Stainless Steel is galvanically compatible with Brass and Copper in potable water plumbing systems



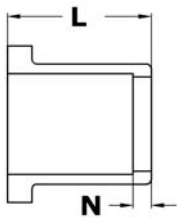
### Reducing Male Adapter

Part No	Size (in)	L	N	T
4136-074	½ x ¾	1 9/16	1/8	3/4



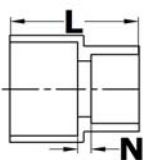
### Reducer Bushing

Part No	Size (in)	L	N
4137-101	¾ X ½	13/16	5/16
4137-130	1 X ½	1	1/2
4137-131	1 X ¾	1 1/16	3/8
4137-166	1¼ X ½	1 1/4	3/4
4137-167	1¼ X ¾	1 1/4	9/16
4137-168	1¼ X 1	1 1/4	3/8
4137-209	1½ X ½	1 1/2	1
4137-210	1½ X ¾	1 1/2	3/4
4137-211	1½ X 1	1 1/2	9/16
4137-212	1½ X 1¼	1 1/2	3/8
4137-247	2 X ½	1 15/16	1 7/16
4137-248	2 X ¾	1 15/16	1 1/4
4137-249	2 X 1	1 15/16	1
4137-250	2 X 1¼	1 15/16	13/16
4137-251	2 X 1½	1 15/16	5/8



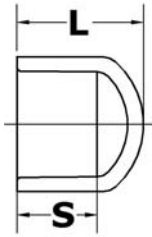
### IPS to CTS Transition Bushing

Part No	Size (in)	L	N
4140-005	½	7/8	3/8
4140-007	¾	15/16	1/4
4140-010	1	1 1/8	1/4
4140-012	1¼	1 7/16	5/16
4140-015	1½	1 1/2	3/16
4140-020	2	1 13/16	1/8

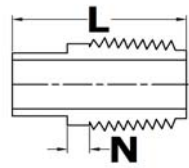


### IPS to CTS Transition Coupling

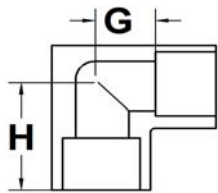
Part No	Size (in)	L	N
4141-007	¾	1 9/16	1/8
4141-010	1	2	1/8



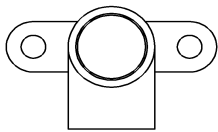
<b>Cap</b>			
Part No	Size (in)	L	S
4147-005	½	5/8	1/2
4147-007	¾	7/8	11/16
4147-010	1	1 1/16	15/16
4147-012	1¼	1 1/4	1 1/8
4147-015	1½	1 1/2	1 5/16
4147-020	2	1 15/16	1 11/16



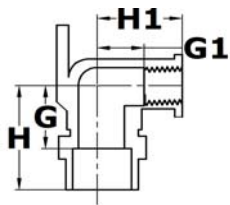
<b>Street Male Adapter</b>			
Part No	Size (in)	L	N
4161-005	½	1 1/2	3/8



<b>Drop Ear 90° Elbow</b>			
Part No	Size (in)	H	G
DE4106-005	½	7/8	3/8

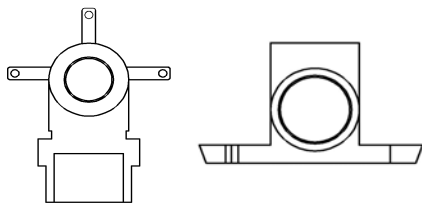


**Drop Ear 90° Elbow - Stainless Steel\***



Part No	Size (in)	H	H1	G	G1
DE4107-005SS	½	1 11/16	15/16	1 2/16	7/16

\*304 Stainless Steel is galvanically compatible with Brass and Copper in potable water plumbing systems



## Headquarters

414 Morgan Street  
P.O. Box 116  
Brownsville, TN 38012  
731-772-3180  
800-776-2756  
Fax: 731-772-0835

## Service Centers

5700 East 39th Avenue  
Denver, CO 80207  
303-575-6701  
800-824-3675  
Fax: 303-575-6706

14820 Carmenita Road, Unit B  
Norwalk, CA 90650  
714-690-9679  
800-995-2726  
Fax: 714-736-1780

10350 Beaudin Blvd, Suite 600  
Woodridge, IL 60517  
630-597-0150  
888-995-7414  
Fax: 630-597-0156

6800 Kingspointe Parkway, Suite 400  
Orlando, FL 32819-8588  
407-206-5705  
800-437-3155  
Fax: 407-515-6542

1600 Kelly Blvd., Suite 13/X30  
Carrollton, TX 75006  
972-417-0073  
800-642-8104  
Fax: 972-417-9733

325 Lasley Avenue  
Wilkes Barre, PA 18706-1424  
570-301-1170  
800-882-5462  
Fax: 570-301-1176

212 Business Park, Building D-106  
7815 South 208th  
Kent, WA 98032  
425-272-0990  
888-285-2726  
Fax: 425-272-0995

## Limited Warranty

LASCO Fittings, Inc. products are warranted to be free from manufacturing defects in materials and workmanship. They are warranted against rot, rust, and electrolytic corrosion for a period of three years from date of installation. If LASCO products prove defective due to manufacturing defects in material or workmanship during that period, the manufacturer will provide new replacement units of the same type and size. No remedy will be granted under this warranty if LASCO products are not used strictly in accordance with LASCO's directions with respect to use and storage or if the products have been modified in any way. THE MANUFACTURER'S LIABILITY UNDER EXPRESSED OR IMPLIED WARRANTY OR FOR ANY REASON IS LIMITED TO FURNISHING REPLACEMENT UNITS OR GRANTING A CREDIT FOR DEFECTIVE UNITS. NO LABOR EXPENSE OR CONSEQUENTIAL DAMAGES WILL BE PAID BY LASCO. THIS WARRANTY IS IN LIEU OF ALL OTHER GUARANTEES AND WARRANTIES, EXPRESSED OR IMPLIED, INCLUDING BUT NOT LIMITED TO, WARRANTIES OF MERCHANTABILITY AND FITNESS FOR PURPOSE, EXCEPT FOR ANY WARRANTIES IMPLIED BY LAW FOR NONCOMMERCIAL CONSUMERS. ANY SUCH WARRANTIES ARE LIMITED TO THE DURATION OF THIS WRITTEN WARRANTY.

DO NOT USE LASCO FITTINGS FOR COMPRESSED AIR OR GASES.  
DO NOT TEST PVC PIPING SYSTEMS WITH COMPRESSED AIR OR GASES.  
DO NOT USE FITTINGS WITH LIQUIDS NOT RECOMMENDED BY LASCO.  
MODIFICATIONS OF FITTINGS VOIDS THE WARRANTY.

## STANDARDS AND SPECIFICATIONS – CTS - CPVC

- ASTM D 1784 – Rigid Poly (Vinyl Chloride) (PVC) Compounds and Chlorinated Poly (Vinyl Chloride) (CPVC) Compounds, Class 23447.
- ASTM D 2846 – CPVC Plastic Hot and Cold Water Distribution System
- ASTM F 493 – Solvent Cements for CPVC Pipe and Fittings
- MATERIAL – Fittings are produced from CPVC Type IV, Grade I.
- LISTINGS – NSF/ANSI Standard 14: Plastics Piping system Components and Related Materials. Includes /ANSI Standard 61, Annex G  
– CSA (Canadian Standards Association) B137.6

Please visit our website: [www.lascofittings.com](http://www.lascofittings.com)

**LASCO**<sup>®</sup>  
**Fittings, Inc.**