

PRICE GROUP	DESCRIPTION	DISCOUNT MULTIPLIER
03	SCH 80 CPVC through 8"	
93	SCH 80 CPVC 10" and larger	
VB	GASKET FOR FLANGE	



PRODUCTS | PRICE LIST

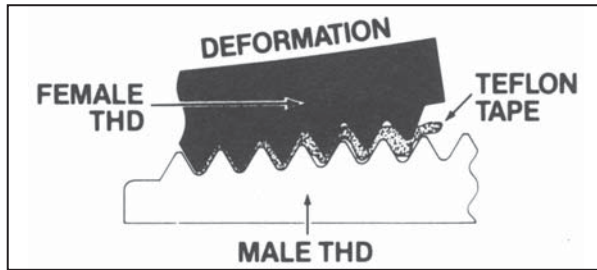
# SCHEDULE 80 CPVC PRESSURE FITTINGS

**INCLUDES: PVC SCHEDULE 80 CPVC 3/8" TO 12"**

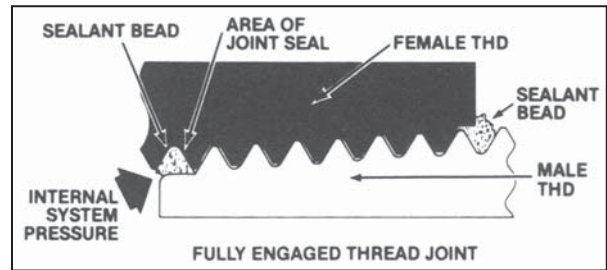
L80C | EFFECTIVE OCTOBER 1, 2018

**CPVC SCHEDULE 80  
PRICE LIST**

# Why LASC0 Recommends Sealant in Threaded Joints



Teflon tape, when compressed between male and female threads in PVC fittings joints, can cause deformation, leading to leakage, and possibly, to cracked female fittings.



Sealant, when compressed between threads, flows outward to achieve an effective seal against leakage in PVC fittings. Use a non-hardening thread sealant that is labeled safe for CPVC.

**⚠ WARNING:** care must be taken to avoid overtightening during assembly of threaded joints – do not overtorque. Generally 1 to 2 turns beyond finger tight is all that is required to obtain a leak-tight seal for most sizes. Do not use both a tape sealant and a paste sealant simultaneously. Contact LASC0 Technical Services for additional information.

**! NOTE:** Some oil based thread pastes and pipe joint compounds contain ingredients that attack PVC or CPVC materials. Suitability of thread paste sealants must be clearly established prior to use. Contact thread paste manufacturer confirm chemical compatibility prior to use.

# FLANGE INSTALLATION GUIDELINES

**FLANGED CONNECTIONS:** Properly installed flanged connections provide a transition fitting to join alternate piping materials, a mechanical means to connect to valves and other equipment, and when joining piping systems where frequent dismantling may be required. The grooved face of the flange provides a liquid tight seal on the gasket when flanges are properly assembled, supported, and proper torque is applied to the bolts.

**GASKETS:** Full face 1/8" thick elastomeric material with a Shore A Durometer hardness of 50-70; gasket material selected must be compatible with application and fluids conveyed. Variations in gasket material and shore hardness may affect sealing torque required.

**FLANGE DIMENSIONS:** Flange ring bolt hole dimensions conform to ANSI B 16.5 Class 150 bolt pattern. Threaded flange hubs are tapered iron pipe size threads per ANSI B2.1. Socket flange hubs conform to ASTM D2467 tapered socket dimensions.

**PRESSURE RATING:** Maximum pressure rating for molded flanges 1/2" thru 12" diameter 150psi non-shock at 73°F. Appropriate temperature de-rating factors must be applied when working at elevated temperatures greater than 73°F.

**BOLTS AND BOLT TORQUE:** Select proper bolt size, quantity, length, and washers for the specific sizes of flanges and equipment being assembled. Always use two (2) wide flat washers per bolt (one under the head and one under the nut). Threads should be clean and well lubricated.

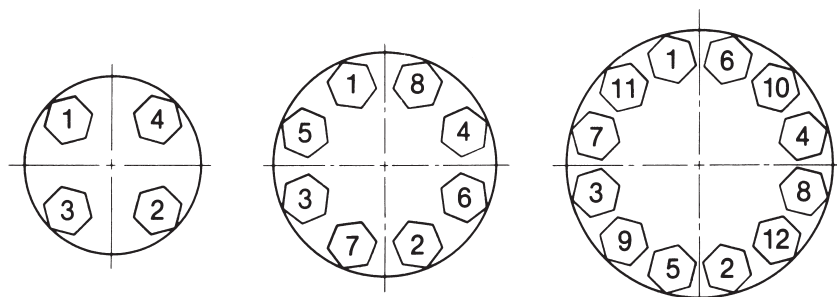
**⚠ WARNING: USE ONLY LUBRICANTS COMPATIBLE WITH PVC OR CPVC MATERIAL.**

## FLANGE ASSEMBLY:

Once the flange hub is correctly joined to the pipe and allowed to cure properly, and the piping system is supported properly, the method for joining two flanges is as follows:

1. Make sure the system is properly supported and aligned, and that mating surfaces of flanges being joined are not separated. Do not use bolts to align system or to pull flanges together.  
**⚠ WARNING: STRESS INDUCED FROM MISALIGNMENT OR IMPROPER SUPPORT WILL DAMAGE THE FLANGE.**
2. With gasket in place align all bolt holes of mating flanges by rotating the flange ring into position.
3. Insert all bolts, flat washers (two standard flat washers per bolt), and nuts.
4. Be certain the faces of the mating surfaces are flush against the gasket prior to bolting down the flanges.
5. Using the illustrated bolt-tightening sequence shown below, tighten all the nuts by hand until snug. Once snug by hand, tighten the bolts diametrically opposite each other (180°) using the sequence shown with a torque wrench. Apply uniform pressure across the flange by tightening in stages of 5 ft-lb increments until final torque values shown in the following table are obtained. Do not over tighten.  
**⚠ WARNING!: OVER TORQUING WILL DAMAGE THE FLANGE.**
6. Care must be taken to avoid bending stresses to the flange when mating to raised faced flange, metallic flange, stationary flanged objects or wafer-style valves. The plastic flange, attached pipe, fitting, and or valve must be supported properly to eliminate stress on the plastic flange.

# RECOMMENDED FLANGE BOLT TORQUE FOR LASCO PLASTIC FLANGES



**NOTE:** Bolt length based on connecting two (2) LASCO flanges, two (2) flat washers, and nut. Actual Bolt lengths required and torque values necessary to seal will vary based on type of equipment being joined. Adjustments will need to be made to when assembling flanges to accommodate valves and other equipment.

Reference ASME B16.5 and ASME NM-1 as applicable. Contact LASCO Technical Services for additional information.

**NOTE:** certain applications may require flange bolts to be re-torqued at least 24 hours after gasket installation depending on flange materials being joined (i.e. transition from PVC to HDPE), and gasket material selected. Work with gasket manufacturer for proper material selection and other gasket design recommendations prior to installation. When evaluating gasket material, be certain to include any surge pressure that could be caused by opening valves and starting pumps.

Flange Size	No. of Bolt Holes	Bolt Dia. (in.)	Min. Bolt Length (in.)	Recommended Torque (Ft./Lbs.)
½	4	½	2	15-20
¾	4	½	2	15-20
1	4	½	2¼	15-20
1¼	4	½	2¼	15-20
1½	4	½	2½	15-20
2	4	5/8	3	20-30
2½	4	5/8	3¼	20-30
3	4	5/8	3¼	20-30
4	8	5/8	3½	20-30
5	8	¾	3¾	25-35
6	8	¾	4	33-50
8	8	¾	4½	33-50
10	12	7/8	5	53-75
12	12	7/8	5	53-75

Use primer and appropriate heavy bodied solvent cement for materials being joined and allow to cure properly prior to flange assembly - follow LASCO solvent welding instructions and/or contact LASCO Technical Services for additional information.

# CPVC SCHEDULE 80 PRICE LIST

## TEES, ELBOWS



Slip x Slip x Slip

TEE					
Part No	Size (in)	Ctn Qty	Code	List Price	
9801-005	½	25	03	16.52	
9801-007	¾	25	03	16.81	
9801-010	1	25	03	20.61	
9801-012	1¼	10	03	43.44	
9801-015	1½	10	03	49.77	
9801-020	2	10	03	55.39	
9801-025	2½	5	03	141.03	
9801-030	3	5	03	141.03	
9801-040	4	5	03	187.67	
9801-060	6	2	03	488.40	
9801-080	8	2	03	1399.01	



Slip x Slip x FPT

TEE					
Part No	Size (in)	Ctn Qty	Code	List Price	
9802-005	½	25	03	41.92	
9802-007	¾	25	03	55.91	
9802-010	1	25	03	69.87	



Slip x Slip x FPT

TEE					
Part No	Size (in)	Ctn Qty	Code	List Price	
<b>NEW</b> 9802-101*	¾ x ¾ x ½	15	03	25.98	
<b>NEW</b> 9802-130*	1 x 1 x ½	50	03	52.17	
<b>NEW</b> 9802-131*	1 x 1 x ¾	15	03	52.17	
<b>NEW</b> 9802-168*	1¼ x 1¼ x 1	10	03	89.91	
<b>NEW</b> 9802-211*	1½ x 1½ x 1	10	03	132.94	
<b>NEW</b> 9802-212*	1½ x 1½ x 1¼	10	03	132.94	
<b>NEW</b> 9802-247*	2 x 2 x ½	10	03	166.82	
<b>NEW</b> 9802-251*	2 x 2 x 1½	10	03	166.82	
<b>NEW</b> 9802-333*	3 x 3 x ½	5	03	370.72	
<b>NEW</b> 9802-334*	3 x 3 x ¾	5	03	370.72	
<b>NEW</b> 9802-337*	3 x 3 x 1½	5	03	370.72	
<b>NEW</b> 9802-338*	3 x 3 x 2	5	03	370.72	
<b>NEW</b> 9802-415*	4 x 4 x ½	5	03	620.84	
<b>NEW</b> 9802-419*	4 x 4 x 1½	5	03	620.84	

\*Sized with BUSHING



Slip x Slip x Slip

REDUCER TEE					
Part No	Size (in)	Ctn Qty	Code	List Price	
9801-101	¾ x ¾ x ½	25	03	36.84	
9801-130	1 x 1 x ½	25	03	42.47	
9801-131	1 x 1 x ¾	25	03	42.47	
<b>NEW</b> 9801-157*	1¼ x 1 x ¾	12	03	80.72	
<b>NEW</b> 9801-158*	1¼ x 1 x 1	15	03	52.67	
<b>NEW</b> 9801-159*	1¼ x 1 x 1¼	15	03	52.67	
<b>NEW</b> 9801-167*	1¼ x 1¼ x ¾	10	03	83.11	
<b>NEW</b> 9801-168*	1¼ x 1¼ x 1	10	03	83.11	
<b>NEW</b> 9801-202*	1½ x 1¼ x 1	10	03	83.11	
<b>NEW</b> 9801-211*	1½ x 1½ x 1	10	03	86.80	
<b>NEW</b> 9801-212*	1½ x 1½ x 1¼	10	03	86.80	
<b>NEW</b> 9801-247*	2 x 2 x ½	10	03	103.40	
<b>NEW</b> 9801-248*	2 x 2 x ¾	10	03	103.40	
9801-249*	2 x 2 x 1	10	03	103.40	
<b>NEW</b> 9801-251*	2 x 2 x 1½	10	03	103.40	
9801-291*	2½ x 2½ x 1½	5	03	118.74	
9801-292*	2½ x 2½ x 2	5	03	122.91	
<b>NEW</b> 9801-333*	3 x 3 x ½	5	03	261.35	
9801-334	3 x 3 x ¾	5	03	261.35	
9801-335	3 x 3 x 1	5	03	210.97	
<b>NEW</b> 9801-336*	3 x 3 x 1¼	5	03	253.04	
9801-338	3 x 3 x 2	5	03	210.97	
<b>NEW</b> 9801-339*	3 x 3 x 2½	6	03	210.97	
<b>NEW</b> 9801-415*	4 x 4 x ½	5	03	320.84	
<b>NEW</b> 9801-416*	4 x 4 x ¾	5	03	320.84	
<b>NEW</b> 9801-417*	4 x 4 x 1	5	03	320.84	
<b>NEW</b> 9801-418*	4 x 4 x 1¼	5	03	320.84	
<b>NEW</b> 9801-419*	4 x 4 x 1½	5	03	320.84	
9801-420	4 x 4 x 2	5	03	266.65	
<b>NEW</b> 9801-422*	4 x 4 x 3	5	03	266.65	
9801-530*	6 x 6 x 3	4	03	852.16	
<b>NEW</b> 9801-532*	6 x 6 x 4	5	03	753.09	
9801-585*	8 x 8 x 6	2	03	1382.46	

\*Sized with BUSHING



FPT x FPT x FPT

REDUCING TEE					
Part No	Size (in)	Ctn Qty	Code	List Price	
9805-003	¾	25	03	36.68	
9805-005	½	25	03	36.68	
9805-007	¾	25	03	52.88	
9805-010	1	25	03	56.93	
9805-012	1¼	10	03	57.25	
9805-015	1½	10	03	60.14	
9805-020	2	10	03	66.78	
9805-025	2½	5	03	328.36	
9805-030	3	5	03	380.97	
9805-040	4	5	03	902.53	

## ELBOWS



Slip x Slip

90° ELL					
Part No	Size (in)	Ctn Qty	Code	List Price	
9806-002	¼	25	03	17.98	
9806-005	½	25	03	7.04	
9806-007	¾	25	03	9.00	
9806-010	1	25	03	14.28	
9806-012	1¼	10	03	30.88	
9806-015	1½	10	03	34.47	
9806-020	2	10	03	41.60	
9806-025	2½	5	03	95.77	
9806-030	3	5	03	108.45	
9806-040	4	5	03	195.29	
9806-060	6	4	03	392.43	
9806-080	8	1	03	960.33	



Slip x Slip x CTS Slip

HOTEL TRANSITION TEE					
Part No	Size (in)	Ctn Qty	Code	List Price	
9801-334CTS	3 IPS x 3 IPS x ¾ CTS	5	03	181.82	
9801-335CTS	3 IPS x 3 IPS x 1 CTS	5	03	181.82	



Slip x FPT

90° ELL				
Part No	Size (in)	Ctn Qty	Code	List Price
9807-005	1/2	25	03	18.59
9807-007	3/4	25	03	21.85
9807-010	1	25	03	28.59
9807-012	1 1/4	10	03	41.92
9807-015	1 1/2	10	03	63.51
9807-020	2	10	03	81.51



FPT x FPT

90° ELL				
Part No	Size (in)	Ctn Qty	Code	List Price
9808-003	3/8	25	03	18.88
9808-005	1/2	25	03	10.96
9808-007	3/4	25	03	16.40
9808-010	1	25	03	23.01
9808-012	1 1/4	10	03	44.33
9808-015	1 1/2	10	03	47.69
9808-020	2	10	03	63.93



Slip x Slip

45° ELL				
Part No	Size (in)	Ctn Qty	Code	List Price
9817-002	1/4	25	03	26.74
9817-005	1/2	25	03	8.62
9817-007	3/4	25	03	12.44
9817-010	1	25	03	19.81
9817-012	1 1/4	10	03	38.87
9817-015	1 1/2	10	03	39.92
9817-020	2	10	03	44.77
9817-025	2 1/2	5	03	91.46
9817-030	3	5	03	117.54
9817-040	4	5	03	161.36
9817-060	6	2	03	497.09
9817-080	8	2	03	1034.23



FPT x FPT

45° ELL				
Part No	Size (in)	Ctn Qty	Code	List Price
9819-003	3/8	25	03	25.11
9819-005	1/2	25	03	23.79
9819-007	3/4	25	03	26.14
9819-010	1	25	03	28.77
9819-012	1 1/4	10	03	49.14
9819-015	1 1/2	10	03	49.14
9819-020	2	10	03	64.87

## COUPLINGS



Slip x Slip

COUPLING				
Part No	Size (in)	Ctn Qty	Code	List Price
9829-002*	1/4	25	03	19.14
9829-005	1/2	25	03	7.45
9829-007	3/4	25	03	10.40
9829-010	1	25	03	14.01
9829-012	1 1/4	10	03	20.99
9829-015	1 1/2	10	03	26.40
9829-020	2	10	03	30.71
9829-025	2 1/2	5	03	68.33
9829-030*	3	5	03	74.23
9829-040*	4	5	03	97.27
9829-060*	6	5	03	229.11
9829-080*	8	4	03	619.18

\*Smooth outer surface, not Hex design.



Slip x Slip

REDUCER COUPLING				
Part No	Size (in)	Ctn Qty	Code	List Price
<b>NEW</b> 9829-101*	3/4 x 1/2	50	03	19.46
<b>NEW</b> 9829-130*	1 x 1/2	25	03	27.78
<b>NEW</b> 9829-131*	1 x 3/4	25	03	27.77
<b>NEW</b> 9829-167*	1 1/4 x 3/4	10	03	63.59
<b>NEW</b> 9829-168*	1 1/4 x 1	25	03	63.59
<b>NEW</b> 9829-209*	1 1/2 x 1/2	10	03	63.08
<b>NEW</b> 9829-210*	1 1/2 x 3/4	10	03	63.08
<b>NEW</b> 9829-211*	1 1/2 x 1	25	03	63.09
<b>NEW</b> 9829-212*	1 1/2 x 1 1/4	20	03	63.08
<b>NEW</b> 9829-247*	2 x 1/2	25	03	83.41
<b>NEW</b> 9829-248*	2 x 3/4	10	03	83.41
<b>NEW</b> 9829-249*	2 x 1	10	03	83.41
<b>NEW</b> 9829-250*	2 x 1 1/4	10	03	83.41
<b>NEW</b> 9829-251	2 x 1 1/2	10	03	83.41
<b>NEW</b> 9829-292*	2 1/2 x 2	10	03	94.98
<b>NEW</b> 9829-335*	3 x 1	8	03	234.92
<b>NEW</b> 9829-336*	3 x 1 1/4	6	03	242.09
<b>NEW</b> 9829-337*	3 x 1 1/2	8	03	242.09
<b>NEW</b> 9829-338	3 x 2	5	03	191.92
<b>NEW</b> 9829-339*	3 x 2 1/2	10	03	192.72
<b>NEW</b> 9829-419*	4 x 1 1/2	4	03	276.75
<b>NEW</b> 9829-420*	4 x 2	6	03	228.93
<b>NEW</b> 9829-421*	4 x 2 1/2	4	03	228.93
<b>NEW</b> 9829-422	4 x 3	5	03	228.93
<b>NEW</b> 9829-530*	6 x 3	2	03	618.03
<b>NEW</b> 9829-532*	6 x 4	2	03	520.05
9829-585	8 x 6	2	03	901.04

\*Sized with BUSHING



FPT x FPT

COUPLING				
Part No	Size (in)	Ctn Qty	Code	List Price
9830-003	3/8	25	03	24.02
9830-005	1/2	25	03	19.81
9830-007	3/4	25	03	31.97
9830-010	1	25	03	36.29
9830-012	1 1/4	10	03	38.49
9830-015	1 1/2	10	03	41.35
9830-020	2	10	03	48.76



# CPVC SCHEDULE 80 PRICE LIST

## ADAPTERS, BUSHINGS



Slip x FPT

FEMALE ADAPTER				
Part No	Size (in)	Ctn Qty	Code	List Price
9835-002	1/4	25	03	24.29
9835-005	1/2	25	03	12.03
9835-007	3/4	25	03	12.68
9835-010	1	25	03	29.35
9835-012	1 1/4	10	03	30.06
9835-015	1 1/2	10	03	35.01
9835-020	2	10	03	60.35
9835-025	2 1/2	5	03	115.75
NEW 9835-030	3	5	03	237.49
NEW 9835-040	4	5	03	395.32



MPT x Slip

MALE ADAPTER				
Part No	Size (in)	Ctn Qty	Code	List Price
9836-005	1/2	25	03	9.61
9836-007	3/4	25	03	11.73
9836-010	1	25	03	19.76
9836-012	1 1/4	10	03	29.09
9836-015	1 1/2	10	03	39.36
9836-020	2	10	03	53.39
9836-025	2 1/2	5	03	145.54
9836-030	3	5	03	195.61
9836-040	4	5	03	330.68

### BUSHINGS



SP x Slip

REDUCER BUSHING				
Part No	Size (in)	Ctn Qty	Code	List Price
9837-052	3/8 x 1/4	25	03	15.56
9837-072	1/2 x 1/4	25	03	15.56
9837-073	1/2 x 3/8	25	03	15.56
9837-101	3/4 x 1/2	25	03	7.96
NEW 9837-129*	1 x 3/8	50	03	27.03
9837-130	1 x 1/2	25	03	12.34
9837-131	1 x 3/4	25	03	12.34
NEW 9837-166*	1 1/4 x 1/2	25	03	32.73
NEW 9837-167	1 1/4 x 3/4	25	03	32.73
9837-168	1 1/4 x 1	10	03	32.73
NEW 9837-209*	1 1/2 x 1/2	25	03	37.01
9837-210	1 1/2 x 3/4	10	03	37.01
9837-211	1 1/2 x 1	10	03	37.01
9837-212	1 1/2 x 1 1/4	10	03	37.01
9837-247	2 x 1/2	10	03	47.77
9837-248	2 x 3/4	10	03	47.77
9837-249	2 x 1	10	03	47.77
9837-250	2 x 1 1/4	10	03	47.77
9837-251	2 x 1 1/2	10	03	47.77
NEW 9837-289*	2 1/2 x 1	5	03	82.14
NEW 9837-290*	2 1/2 x 1 1/4	10	03	58.16
NEW 9837-291*	2 1/2 x 1 1/2	5	03	58.15
9837-292	2 1/2 x 2	10	03	58.15
NEW 9837-333*	3 x 1/2	10	03	103.00
NEW 9837-334*	3 x 3/4	10	03	101.31
NEW 9837-335*	3 x 1	10	03	88.62
NEW 9837-336*	3 x 1 1/4	10	03	88.62
NEW 9837-337	3 x 1 1/2	5	03	88.62



SP x Slip

REDUCER BUSHING (con't)				
Part No	Size (in)	Ctn Qty	Code	List Price
9837-338	3 x 2	5	03	88.62
9837-339	3 x 2 1/2	5	03	88.62
NEW 9837-416*	4 x 3/4	10	03	148.72
NEW 9837-418*	4 x 1 1/4	6	03	159.33
NEW 9837-419*	4 x 1 1/2	6	03	148.73
9837-420	4 x 2	5	03	97.98
9837-421*	4 x 2 1/2	5	03	97.98
9837-422	4 x 3	5	03	97.98
NEW 9837-528*	6 x 2	5	03	210.22
NEW 9837-530*	6 x 3	5	03	210.22
9837-532	6 x 4	5	03	208.75
9837-585	8 x 6	2	03	687.23

\*Sized with BUSHING

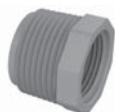


SP x FPT

REDUCER BUSHING (FLUSH STYLE)				
Part No	Size (in)	Ctn Qty	Code	List Price
9838-052	3/8 x 1/4	25	03	16.72
9838-072	1/2 x 1/4	25	03	16.72
9838-073	1/2 x 3/8	25	03	16.72
NEW 9838-098*	3/8 x 1/4	50	03	18.65
NEW 9838-099*	3/4 x 3/8	50	03	18.65
9838-101	3/4 x 1/2	25	03	8.65
NEW 9838-129*	1 x 3/8	50	03	24.77
9838-130	1 x 1/2	25	03	10.98
9838-131	1 x 3/4	25	03	10.98
NEW 9838-166*	1 1/4 x 1/2	25	03	35.44
NEW 9838-167*	1 1/4 x 3/4	25	03	35.44
9838-168	1 1/4 x 1	10	03	35.44
9838-209	1 1/2 x 1/2	15	03	43.65
NEW 9838-210*	1 1/2 x 3/4	15	03	43.65
9838-211	1 1/2 x 1	10	03	43.65
9838-212	1 1/2 x 1 1/4	10	03	43.65
9838-247	2 x 1/2	10	03	60.01
NEW 9838-248*	2 x 3/4	10	03	60.01
NEW 9838-249*	2 x 1	10	03	60.01
NEW 9838-250*	2 x 1 1/4	10	03	60.01
9838-251	2 x 1 1/2	10	03	60.01
NEW 9838-287*	2 1/2 x 1/2	10	03	96.02
NEW 9838-291*	2 1/2 x 1 1/2	10	03	95.37
9838-292	2 1/2 x 2	10	03	95.37
NEW 9838-335*	3 x 1	10	03	254.08
NEW 9838-336*	3 x 1 1/4	10	03	222.27
NEW 9838-337*	3 x 1 1/2	10	03	222.27
9838-338	3 x 2	5	03	212.59
9838-339	3 x 2 1/2	5	03	214.32
NEW 9838-420*	4 x 2	5	03	433.20
9838-422	4 x 3	5	03	433.20

\*Sized with BUSHING

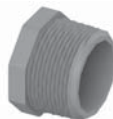




MPT x FPT

REDUCER BUSHING (FLUSH STYLE)				
Part No	Size (in)	Ctn Qty	Code	List Price
9839-101	3/4 x 1/2	25	03	10.65
9839-130	1 x 1/2	25	03	17.95
9839-131	1 x 3/4	25	03	17.95
9839-166	1 1/4 x 1/2	10	03	35.63
9839-167	1 1/4 x 3/4	10	03	35.63
9839-168	1 1/4 x 1	10	03	35.36
9839-210	1 1/2 x 3/4	25	03	42.92
9839-211	1 1/2 x 1	25	03	42.92
9839-212	1 1/2 x 1 1/4	10	03	42.58
9839-249	2 x 1	10	03	47.45
9839-250	2 x 1 1/4	10	03	47.45
9839-251	2 x 1 1/2	10	03	42.58
9839-292	2 1/2 x 2	10	03	114.09
9839-338	3 x 2	5	03	153.49
9839-420	4 x 2	5	03	263.75
9839-422	4 x 3	5	03	263.75

## PLUGS



MPT

PLUG				
Part No	Size (in)	Ctn Qty	Code	List Price
9850-002	1/4	25	03	12.05
9850-005	1/2	25	03	10.47
9850-007	3/4	25	03	13.26
9850-010	1	25	03	21.82
9850-012	1 1/4	10	03	32.96
9850-015	1 1/2	10	03	27.34
9850-020	2	10	03	37.22
9850-030	3	5	03	67.65
9850-040	4	5	03	78.36

## CAPS



Slip

CAP				
Part No	Size (in)	Ctn Qty	Code	List Price
9847-005	1/2	25	03	11.59
9847-007	3/4	25	03	16.52
9847-010	1	25	03	29.23
9847-012	1 1/4	10	03	31.97
9847-015	1 1/2	10	03	31.97
9847-020	2	10	03	33.73
9847-025	2 1/2	5	03	113.52
9847-030	3	5	03	124.41
9847-040	4	5	03	126.47
9847-060	6	2	03	418.48



FPT

CAP				
Part No	Size (in)	Ctn Qty	Code	List Price
9848-002	1/4	50	03	14.99
9848-003	3/8	25	03	14.99
9848-005	1/2	25	03	12.88
9848-007	3/4	25	03	21.31
9848-010	1	25	03	29.84
9848-012	1 1/4	10	03	53.2
9848-015	1 1/2	10	03	54.52
9848-020	2	10	03	78.53
9848-030	3	5	03	238.38
9848-040	4	5	03	346.28



Blind

## FLANGES

### FLANGE (SOLID STYLE)

Part No	Size (in)	Ctn Qty	Code	List Price
9851-005	1/2	25	03	31.34
9851-007	3/4	25	03	32.06
9851-010	1	25	03	35.01
9851-012	1 1/4	10	03	42.74
9851-015	1 1/2	10	03	47.43
9851-020	2	10	03	57.42
9851-025	2 1/2	5	03	118.98
9851-030	3	5	03	124.41
9851-040	4	5	03	168.09
9851-060	6	5	03	286.35

### FLANGE (SOLID STYLE)

Part No	Size (in)	Ctn Qty	Code	List Price
9852-005	1/2	25	03	43.82
9852-007	3/4	25	03	53.14
9852-010	1	25	03	57.96
9852-012	1 1/4	10	03	80.46
9852-015	1 1/2	10	03	85.17
9852-020	2	10	03	86.74
9852-030	3	5	03	139.71
9852-040	4	5	03	217.19

### FLANGE (BLIND)

Part No	Size (in)	Ctn Qty	Code	List Price
9853-015	1 1/2	10	03	100.56
9853-020	2	10	03	105.64
9853-030	3	5	03	198.66
9853-040	4	5	03	269.09
9853-060	6	2	03	451.36
9853-080	8	5	03	837.26



Blind



Slip

**FLANGE (VAN STONE STYLE - LOOSE RING)**

Part No	Size (in)	Ctn Qty	Code	List Price
9854-005	1/2	25	03	31.56
9854-007	3/4	25	03	32.26
9854-010	1	25	03	35.23
9854-012	1 1/4	5	03	42.98
9854-015	1 1/2	10	03	47.77
9854-020	2	10	03	57.84
9854-025	2 1/2	5	03	119.82
9854-030FT	3	5	03	125.45
9854-040FT	4	5	03	169.41
9854-060FT	6	5	03	288.68
9854-080FT	8	2	03	868.61
9854-100FT	10	2	93	2091.04
9854-120FT	12	2	93	3137.69

FT Represents FiberTuff Ring.



SP

**FLANGE (VAN STONE STYLE - LOOSE RING)**

Part No	Size (in)	Ctn Qty	Code	List Price
9856-010	1	25	03	44.48
9856-012	1 1/4	10	03	55.02
9856-015	1 1/2	10	03	60.85
9856-020	2	10	03	85.17
9856-040	4	5	03	150.28
9856-060	6	2	03	328.21
9856-080	8	2	03	669.03



**FLANGE GASKET**

Part No	Size (in)	Ctn Qty	Code	List Price
20GE	FOR 2" FLANGE	25	VB	2.54
25GE	FOR 2 1/2" FLANGE	25	VB	3.75
30GE	FOR 3" FLANGE	25	VB	3.75
40GE	FOR 4" FLANGE	25	VB	4.43
50GE	FOR 5" FLANGE	10	VB	5.92
60GE	FOR 6" FLANGE	10	VB	8.40
80GE	FOR 8" FLANGE	5	VB	13.23
100GE	FOR 10" FLANGE	5	VB	15.44
120GE	FOR 12" FLANGE	5	VB	19.83

NOTE: Bolt sets for Flange x Flange connections are not offered. For bolt size and quantity requirements, see page 2. Gaskets are: EPDM material, ANSI B16.5 Class 150 dimensions, 1/8" Thick

**WYES**



**WYE**

Part No	Size (in)	Ctn Qty	Code	List Price
9875-020	2	10	03	132.79

Slip x Slip x Slip

**REDUCING WYE**

Part No	Size (in)	Ctn Qty	Code	List Price
<b>NEW</b> 9875-247*	2 x 1/2	10	03	184.23
<b>NEW</b> 9875-248*	2 x 3/4	10	03	184.23
<b>NEW</b> 9875-249*	2 x 1	10	03	184.23
<b>NEW</b> 9875-250*	2 x 1 1/4	10	03	184.23
<b>NEW</b> 9875-251*	2 x 1 1/2	10	03	184.23

\*Sized with BUSHING

**UNIONS**



Slip x Slip

**UNION (O-RING TYPE)**

Part No	Size (in)	Ctn Qty	Code	List Price
9897-002	1/4	10	03	48.00
9897-005	1/2	10	03	32.06
9897-007	3/4	10	03	33.36
9897-010	1	10	03	40.04
9897-012	1 1/4	5	03	81.01
9897-015	1 1/2	5	03	82.51
9897-020	2	5	03	136.75
9897-025	2 1/2	5	03	223.67
9897-030	3	5	03	283.83
9897-040	4	1	03	358.49



FPT x FPT

**UNION (O-RING TYPE)**

Part No	Size (in)	Ctn Qty	Code	List Price
9898-003	3/8	10	03	53.95
9898-005	1/2	10	03	34.20
9898-007	3/4	10	03	60.45
9898-010	1	10	03	83.36
9898-012	1 1/4	5	03	158.83
9898-015	1 1/2	5	03	158.83
9898-020	2	5	03	179.54



Slip x FPT

**UNION (O-RING TYPE)**

Part No	Size (in)	Ctn Qty	Code	List Price
9899-005	1/2	10	03	36.37
9899-007	3/4	10	03	63.43
9899-010	1	10	03	87.56
9899-012	1 1/4	5	03	166.79
9899-015	1 1/2	5	03	166.79
9899-020	2	5	03	188.57
9899-030	3	5	03	362.05



Viton

**UNION O-RING (CURRENT STYLE)**

Part No	Size (in)	Ctn Qty	Code	List Price
80115	1/2	1	02	2.88
80118	3/4	1	02	3.19
80215	1	1	02	3.92
80221	1 1/4	1	02	6.72
80223	1 1/2	1	02	7.39
80227	2	1	02	7.39
80235	3	1	02	16.80



Viton

**UNION O-RING (PRIOR TO 2004)**

Part No	Size (in)	Ctn Qty	Code	List Price
80213	1/2	1	02	2.88
80216	3/4	1	02	3.19
80222	1	1	02	3.92
80225	1 1/4	1	02	6.72
80227	1 1/2	1	02	7.39
80231	2	1	02	9.06
80240	3	1	02	16.80



# CPVC SCHEDULE 80 PRICE LIST



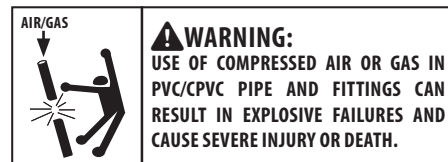
CUSTOMER SERVICE  
Phone: (800) 776-2756 | Fax: (731) 772-0835  
Email: customerservice@lascofittings.com  
www.lascofittings.com

## Limited Warranty

LASCO Fittings, Inc. products are warranted to be free from manufacturing defects in materials and workmanship. They are warranted against rot, rust, and electrolytic corrosion for a period of three years from date of installation. If LASCO products prove defective due to manufacturing defects in material or workmanship during that period, the manufacturer will provide new replacement units of the same type and size. No remedy will be granted under this warranty if LASCO products are not used strictly in accordance with LASCO's directions with respect to use and storage or if the products have been modified in any way.

THE MANUFACTURER'S LIABILITY UNDER EXPRESSED OR IMPLIED WARRANTY OR FOR ANY REASON IS LIMITED TO FURNISHING REPLACEMENT UNITS OR GRANTING A CREDIT FOR DEFECTIVE UNITS. NO LABOR EXPENSE OR CONSEQUENTIAL DAMAGES WILL BE PAID BY LASCO. THIS WARRANTY IS IN LIEU OF ALL OTHER GUARANTEES AND WARRANTIES, EXPRESSED OR IMPLIED, INCLUDING BUT NOT LIMITED TO, WARRANTIES OF MERCHANTABILITY AND FITNESS FOR PURPOSE, EXCEPT FOR ANY WARRANTIES IMPLIED BY LAW FOR NONCOMMERCIAL CONSUMERS. ANY SUCH WARRANTIES ARE LIMITED TO THE DURATION OF THIS WRITTEN WARRANTY.

DO NOT USE LASCO FITTINGS FOR COMPRESSED AIR OR GASES.  
DO NOT TEST PVC PIPING SYSTEMS WITH COMPRESSED AIR OR GASES.  
DO NOT USE FITTINGS WITH LIQUIDS NOT RECOMMENDED BY LASCO.  
MODIFICATIONS OF FITTINGS VOIDS THE WARRANTY.



## STANDARDS AND SPECIFICATIONS – SCHEDULE 80 CPVC

- ASTM D-1784 – Rigid Poly (Vinyl Chloride) (PVC) Compounds and Chlorinated Poly Vinyl Chloride) (CPVC) Compounds.
- ASTM F 437 – Threaded Chlorinated Poly (Vinyl Chloride) (CPVC) Plastic Pipe Fittings, Schedule 80.
- ASTM F 439 – Socket Type Chlorinated Poly (Vinyl Chloride) (CPVC) Plastic Pipe Fittings, Schedule 80.
- MATERIAL – LASCO Schedule 80 CPVC Fittings are produced from rigid Type IV, Grade I CPVC compound having a minimum Cell Classification of 23447 per ASTM D1784. O-Rings are produced from a Fluorocarbon Elastomer (VITON).
- LISTINGS – NSF (National Sanitation Foundation) listed for potable water service (NSF Std 61 & Std 14 as applicable).

Contact LASCO Technical Services for additional information regarding applicable standards and specifications.

## Standard Terms and Conditions of Sale

1. Terms: 2% 35 days, net 45 days.
2. Freight: FOB LASCO warehouses. Prepaid on orders totaling **\$1500 net** for one shipment to single destination within the contiguous United States.
3. Minimum Order: **\$100 net**. Smaller orders billed at this minimum charge.
4. Claims for shipping errors must be made within 15 days to LASCO. Claims for damage or shortages should be directed promptly to the common carrier by the consignee.
5. Returns will be accepted only by prior authorization and if shipped freight prepaid. Returned merchandise subject to a **MINIMUM 25%** handling/restocking charge.
6. Pricing is subject to change without prior notice. However, prior notification will be given in the event of price changes in the period between order placement and scheduled shipment.
7. Offer to sell is not implied by possession of this or other LASCO price lists.