

# Slo-Close Plastic Ball Valves

CATEGORY	DISCOUNT MULTIPLIER
PRICING SCH B	
PRICING SCH S	



Distributed by:

## LASCO<sup>®</sup> Fittings, Inc.

LIST PRICE SHEET

EFFECTIVE July 1, 2017

VPSC-7 (Supersedes VPSC-6)

Note: Price changes are stated in BOLD print.

This List Price Sheet is available in PDF format at [www.lascofittings.com](http://www.lascofittings.com)

CUSTOMER SERVICE: 414 MORGAN STREET, BROWNSVILLE, TN 38012, TOLL-FREE PHONE (800) 776 2756 OR (731) 772 3180, FAX (731) 772 0835, WWW.LASCOFITTINGS.COM

## SLO-CLOSE PLASTIC BALL VALVES

Patented thermoplastic gear driven operating nut rotates 360° to achieve a 90° turn of the ball. The result is slow closure and the elimination of water hammer, while maintaining the positive shut-off and reliable service of a ball valve. Components and internal gears of the Slo-Close system are molded of durable Acetal material, and the Set screw is 1/16 SS. The system is mounted on Colonial's Full Block True Union Ball Valve, and Super C Sch 80 Compact Valve, both of which have a proven record of quality in industrial process piping, water treatment, commercial plumbing and irrigation markets for over 30 years.

Valve can be actuated by use of a standard Champion Sprinkler Key, or Lasco Valve Key (See page 2) or by hand. Successfully introduced to the Turf Irrigation market in isolation valve applications, the Slo-Close valve will perform in any industry where the avoidance of water hammer is a priority. **Do not use for throttling (in partially open position).**

Line item detail is listed below. Contact customer service for discounts.

LASCO Fittings, Inc. (731) 772-3180  
414 Morgan Street (800) 776-2756  
Brownsville, TN 38012 Fax: (731) 772-0835

NOTE: Master distribution of the Slo-Close Series for the irrigation industry is offered through:

## RECOMMENDATIONS TO INSTALLERS AND USERS

Plastic piping systems should be engineered, installed, operated and maintained in accordance with accepted standards and procedures. Suitability for the intended application should be determined and verified by the designer and/or installer. Prior to assembly, all piping components should be inspected for damage or irregularities, and for the proper fit of mating components. The published instructions of the manufacturers of all attributes of the piping system (including but not limited to: pipe, fittings, valves, solvent cement & primer or thread sealant. Due to the variable quality and tolerances of plastic male threaded nipples, Colonial no longer recommends the use of PTFE (Teflon<sup>®</sup>) tape. We recommend using the following thread sealant: IPS WELD-ON All Seal™. All design, installation, operation and maintenance personnel must be trained on the proper precautions, use, handling, and installation of thermoplastic piping systems prior to use. A NOTE ON VALVE SELECTION: Ball Valves are designed for On/Off service and are NOT SUITABLE for throttling in a semi-closed position. Butterfly Valves ARE SUITABLE for both throttling and for On/Off service.

## SLO-CLOSE FULL BLOCK TRUE UNION BALL VALVES



### Assembled in USA

Pressure Ratings:

1" - 2" 235 psi

2-1/2" & 3" 150 psi

Valves with flange end pieces, 150 psi

\*2-1/2" (3" with reducers)

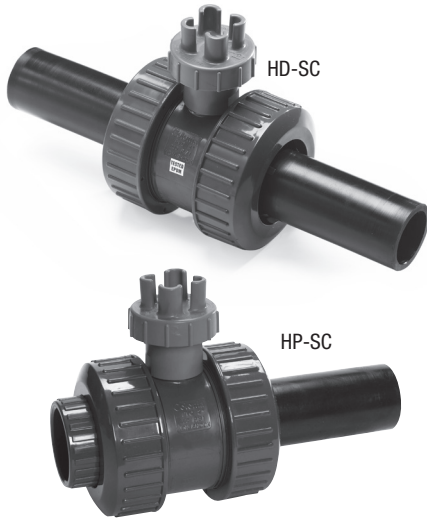
Note: All 2" & 63mm True Union Slo-Close Valves are assembled with Union Nuts molded from CPVC material. CPVC material provides more resistance to stress and fatigue. This upgrade is limited to the 2" size, due to its widespread use in lateral isolation in the golf and heavy-turf market.

Colonial always recommends proper handling and alignment of valves during installation, and does not recommend valves for use in conditions of bending stress, misalignment, or hydraulic shock (water hammer).

Part No.	Size	Ctn. Qty.	List
<b>PVC w/EPDM O-RINGS: Pricing Schedule S</b>			
<b>Socket and Threaded End Connectors</b>			
V10101N-SC	1	24	\$104.25
V14101N-SC	1-1/4	12	132.61
V17101N-SC	1-1/2	12	132.61
V20101N-SC	2	6	205.10
<b>Socket</b>			
V27101N-SC*	2-1/2	1	430.91
V30101N-SC	3	1	430.91
<b>Threaded</b>			
V27111N-SC*	2-1/2	1	430.91
V30111N-SC	3	1	430.91
<b>w/Metric Socket End pcs.</b>			
V63101N-SC	63 mm	6	\$205.11
V90101N-SC	90 mm	1	430.91
<b>NEW Socket x Flange (ANSI Class 150)</b>			
V17101NF-SC	1-1/2	1	\$154.02
V20101NF-SC	2	1	219.39
V27101NF-SC	2-1/2	1	454.29
V30101NF-SC	3	1	454.29
<b>NEW NPT Thread x Flange (ANSI Class 150)</b>			
V17111NF-SC	1-1/2	1	\$154.02
V20111NF-SC	2	1	219.39
V27111NF-SC	2-1/2	1	454.29
V30111NF-SC	3	1	454.29

Pressure ratings are for non-shock water at 73°F.

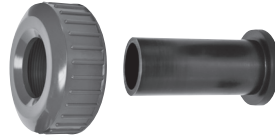
## SLO-CLOSE FULL BLOCK TUBV WITH HDPE SPIGOT DR11 END CONNECTORS



Part No.	Size	Ctn. Qty.	List
Pricing Schedule S			
<b>PVC/EPDM HDPE x HDPE</b>			
V20101HD-SC	2	6	\$266.86
V30101HD-SC	3	1	445.31
<b>PVC/EPDM HDPE x PVC Socket</b>			
V20101HP-SC	2	6	\$258.68
V30101HP-SC	3	1	434.14
<b>PVC/EPDM HDPE x PVC FIPT</b>			
V20111HP-SC	2	6	\$258.68
V30111HP-SC	3	1	434.14

Part No.	Size	Ctn. Qty.	List
Pricing Schedule S			
<b>PVC/EPDM Metric HDPE x HDPE</b>			
V63101HD-SC	63mm	6	\$266.86
V90101HD-SC	90mm	1	445.31
<b>PVC/EPDM Metric HDPE x PVC Metric Socket</b>			
V63101HP-SC	63mm	6	\$266.86
V90101HP-SC	90mm	1	434.14

### HDPE SPIGOT END CONNECTOR KITS FOR FULL BLOCK TUBVs



Part No.	Union Nut Material	Size	Ctn. Qty.	List
Pricing Schedule B				
KIT26013-C	CPVC	2	1 (kit)	\$41.86
KIT6326013-C	CPVC	63mm	1 (kit)	41.86
KIT26014	PVC	3	1 (kit)	58.48
KIT9026014	PVC	90mm	1 (kit)	58.48

Each Kit contains 1 HDPE Spigot End Connector (DR 11, 3408 HDPE), and a union nut. Allows connection of a Full Block TUBV to an HDPE piping system.

#### Assembled in USA

HDPE DR11 End Pieces are custom designed and molded for Colonial Full Block TUBV of HDPE 3408 material. They are to be joined to HDPE pipe using standard butt fusion equipment, electro-fusion couplings, or compression adapters, following equipment manufacturer's recommendations.

This valve is not suitable for butt fusion in a section of HDPE pipe that exceeds 24" in length due to thermal expansion and contraction of HDPE. It is designed to be connected to a directional-changing fitting.

Pressure Ratings:  
 2" 160 psi  
 3" 150 psi

Note: All 2" & 63mm True Union Slo-Close Valves are assembled with Union Nuts molded from CPVC material. CPVC material provides more resistance to stress and fatigue. This upgrade is limited to the 2" size, due to its widespread use in lateral isolation in the golf and heavy-turf market.

Colonial always recommends proper handling and alignment of valves during installation, and does not recommend valves for use in conditions of bending stress, misalignment, or hydraulic shock (water hammer).

### CENTER CARTRIDGE REPLACEMENTS FOR TRUE UNION SCVs



Part No.	Size	Ctn. Qty.	List
Pricing Schedule S			
V20101SC-CR	2	12	\$136.00
V30101SC-CR	2-1/2 & 3	6	240.00

PVC/EPDM Cartridge fits all types of true union SCVs, allowing for repair of valve while utilizing installed union nuts and end pcs.

### SLO-CLOSE SUPER "C"™ COMPACT VALVE

Pressure Rating  
235 psi



Part No.	Size	Ctn. Qty.	List
PVC w/EPDM O-Rings: Pricing Schedule S			
V20191N-SC	SXS	2	18 \$102.16

### VALVE KEY FOR USE WITH SLO-CLOSE VALVES

Part No.	Ctn. Qty.	List
Pricing Schedule B		
Valve Key 1	10	\$2.70
*Pipe not included.		



A unique 3/4" cap and a 3/4" tee provides the makings of a specially designed PVC version of a sprinkler key for use with Slo-Close Valves. By buying the kit (includes tee and cap) and adding pipe\*, you can create the perfect key length to reach each valve. Cost efficient and super easy!



Distributed by:  
**LASCO®**  
**Fittings, Inc.**

Product drawings and/or photographs are representative and may not fully show product configurations. Please visit our website to view current PDF catalog sheets for each valve category.

### WRENCH FOR VALVE UNION NUTS



This wrench fits securely over the ribs of the valve union nut to enable tightening past hand-tight. (Caution – Excessive tightening may cause the valve to bind.)

Part No.	Size	Ctn. Qty.	List
Pricing Schedule B			
<b>PVC Wrench</b>			
V20W-PVC	2"	1	\$57.89
<b>Aluminum Wrench</b>			
V20W	2"	1	\$147.37
V30W	2-1/2" & 3"	1	\$168.42

### OPERATING NUT REPLACEMENT KITS FOR SLO-CLOSE VALVES

Includes all parts of the operating nut assembly. Operating nut can be replaced with the valve in-line, depressurized.

Part No.	Size	Ctn. Qty.	List
Pricing Schedule B			
V10SCVR	1"	1	\$16.84
V17SCVR	1-1/4 & 1-1/2"	1	\$16.84
V20SCVR	2"	1	\$16.84
V30SCVR	2-1/2 & 3"	1	\$16.84

CUSTOMER SERVICE: 414 MORGAN STREET, BROWNSVILLE, TN 38012, TOLL-FREE PHONE (800) 776 2756 OR (731) 772 3180, FAX (731) 772 0835, WWW.LASCOFITTINGS.COM

Pressure ratings are for non-shock water at 73°F.