

Hotel Transition Tees



LASCO Fittings, Inc. is pleased to announce new **CPVC-CTS Fittings** for use in hotel construction and other applications. Hotel Transition tees (9801-334CTS and 9801-335CTS) are 3" Sch 80 CPVC IPS reducing tees with CPVC-CTS topouts. These tees are used to transition from the 3" CPVC IPS mainline in the hallway to the 1" or 3/4" CPVC CTS branch lines for each room.

Part No	Size	Description	Ctn Qty
9801-334CTS	3 IPS x 3 IPS x 3/4 CTS	Tee (Slip)	5
9801-335CTS	3 IPS x 3 IPS x 1 CTS	Tee (Slip)	5

STANDARDS AND SPECIFICATIONS

ASTM D 1784 – Rigid Poly (Vinyl Chloride) (PVC) Compounds and Chlorinated Poly (Vinyl Chloride) (CPVC) Compounds, Class 23447-B.

ASTM F 439 – Socket Type Chlorinated Poly (Vinyl Chloride) (CPVC) Plastic Pipe Fittings, Schedule 80.

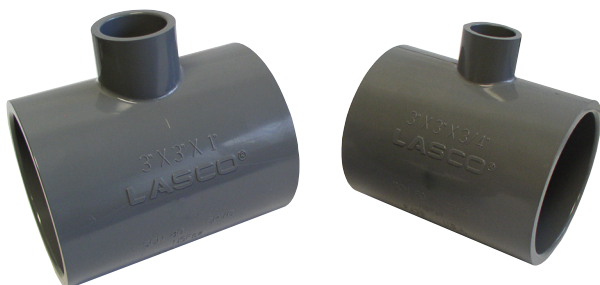
Bushing meets ASTM D 2846 - Chlorinated Poly (Vinyl Chloride) (CPVC) Plastic Hot- and Cold-Water Distribution Systems

MATERIAL – LASCO Schedule 80 CPVC fittings are produced from CPVC Type IV, Grade I.

LISTINGS – NSF International for potable water services.

Also Available:

3" Schedule 80 CPVC TEE



Part No	Size	Description	Ctn Qty
9801-334	3 x 3 x 3/4	Tee (Slip)	5
9801-335	3 x 3 x 1	Tee (Slip)	5