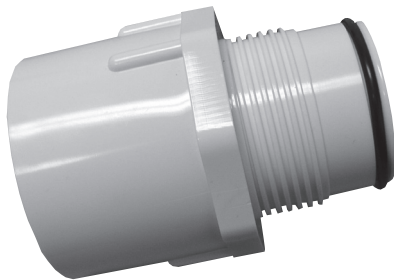


Heavy Turf Adapters



LASCO Fittings, Inc is pleased to announce our Complete Line of Heavy Turf Adapters. Now you can increase or reduce the outlet or inlet diameter of any ACME Swing Joint without replacing the entire Swing Joint.

- Change the ACME outlet diameter without digging up the Swing Joint.
- Reduce Sprinkler conversion costs.
- Adapt other brands of Swing Joints to LASCO Service Fittings.
- Reduce LASCO Heavy Turf Mainline fittings from 1½" ACME to 1" and 1¼" Female ACME thread.



Part No	Male ACME	Female ACME	Ctn Qty
539-132	1	1¼	25
539-133	1	1½	25
539-168	1¼	1	25
539-169	1¼	1½	25
539-211	1½	1	25
539-212	1½	1¼	25

STANDARDS AND SPECIFICATIONS

ASTM F 1970 – Standard Specifications for Special Engineered Fittings for use in Poly Vinyl Chloride (PVC) Systems

PRESSURE RATED at 315 psi per ASTM F 1970

MATERIAL – LASCO Schedule 40 Fittings are produced from PVC Type 1, Cell Classification 12454-B.
O-rings are produced from Buna-N (Nitrile) Material.

Contact Us:

414 Morgan Street • Brownsville, TN 38012 • (731) 772-3180 • (800) 776-2756 • Fax: (731) 772-0835
visit our website: www.lascofittings.com