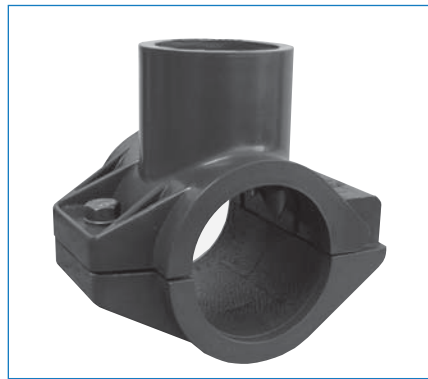


1½" x 1" TAP'T™ SADDLE

Now you can install LASCO Swing Joints and LASCO Swivel Joints onto 1½" HDPE lines for auxiliary irrigation within or outside of the golf course. This new Saddle uses the same tested gasket and clamping technology as the larger Tap't Saddles, however the outlet is a 1" IPS Socket. This 1" Socket allows for connection to either Swivel Joints and/or Swing Joints.

- Used around greens, tee boxes, club houses and other landscaping
- Pressure Rated at 235 psi per ASTM F1970
- 304 Stainless Steel Hardware is captured...no loose pieces to drop
- Use with "H" inlet configuration Swing Joint for vertical saddle mounting in Closed Systems (Valve in Head)
- Use with T92_-4__ Series 1" Swivel Joints for vertical saddle mounting in Open Systems (Valve in Box)
- Use with T92_-2__ Series 1" Swivel Joints for horizontal saddle mounting in Open Systems (Valve in Box)
- A Reducer Bushing can be used for ¾" or ½" Swivel Joints



PART NO	SIZE	DESCRIPTION	CTN QTY	LIST
361-211	1½ x 1	Saddle	5	\$14.46