



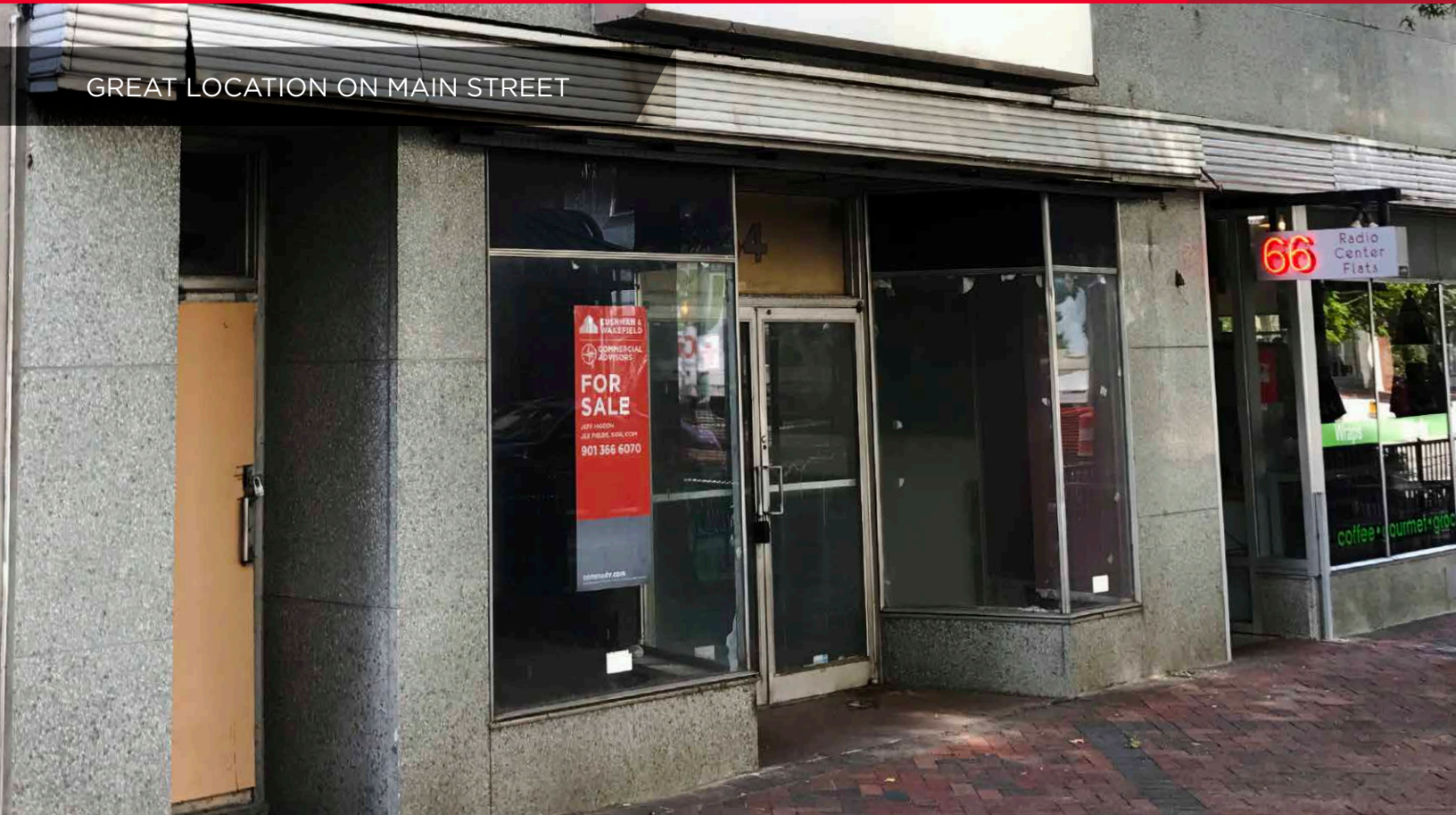
AVAILABLE

# South Main

64 South Main / Memphis, TN 38103

Downtown Submarket

GREAT LOCATION ON MAIN STREET

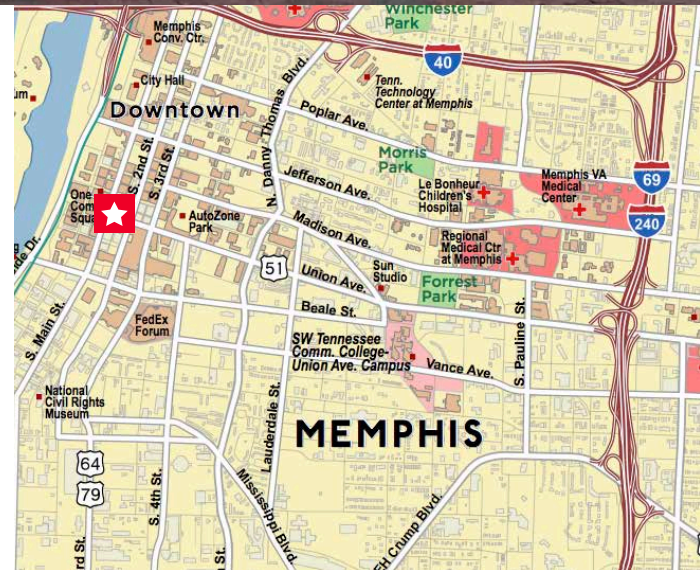


## Prime Development Opportunity 11,145 SF Available

- Union and Main Street location
- Potential mixed use
- Excellent visibility downtown & lots of foot traffic
- Lots of surrounding amenities
- Shell condition

### Building Features

Building Size	11,145 SF
Asking Price	\$355,000



**Jeff Higdon**  
Senior Associate  
901 273 2376  
jhigdon@commadv.com

**Jeb Fields, SIOR, CCIM**  
Principal  
901 362 4315  
jfields@commadv.com

5101 Wheelis Drive, Suite 300  
Memphis, TN 38117  
Main: 901 366 6070  
[www.commadv.com](http://www.commadv.com)

*Independently Owned and Operated / A Member of the Cushman & Wakefield Alliance*

Cushman & Wakefield Copyright 2015. No warranty or representation, express or implied, is made to the accuracy or completeness of the information contained herein, and same is submitted subject to errors, omissions, change of price, rental or other conditions, withdrawal without notice, and to any special listing conditions imposed by the property owner(s). As applicable, we make no representation as to the condition of the property (or properties) in question.



AVAILABLE

# South Main

64 South Main / Memphis, TN 38103

Downtown Submarket

## Great Downtown Redevelopment Opportunity



**Jeff Higdon**  
Senior Associate  
901 273 2376  
jhigdon@commadv.com

**Jeb Fields, SIOR, CCIM**  
Principal  
901 362 4315  
jfields@commadv.com

5101 Wheelis Drive, Suite 300  
Memphis, TN 38117  
Main: 901 366 6070  
[www.commadv.com](http://www.commadv.com)

*Independently Owned and Operated / A Member of the Cushman & Wakefield Alliance*

Cushman & Wakefield Copyright 2015. No warranty or representation, express or implied, is made to the accuracy or completeness of the information contained herein, and same is submitted subject to errors, omissions, change of price, rental or other conditions, withdrawal without notice, and to any special listing conditions imposed by the property owner(s). As applicable, we make no representation as to the condition of the property (or properties) in question.