

**Habitat for Humanity of Greater Memphis**  
**a**  
**501-C3 Tax Exempt Charitable Organization**

**Invitation to Bid**  
**Framing**

**Please quote framing a single family detached, single level house with no garage averaging 1,150 SF. Approximate dimensions will be 30' X 38' with an 8ft plate height. Exterior walls to be caulked at bottom plate, fully sheathed in OSB, wrapped in DOW Weathermate Housewrap, and 1' DOW BlueBoard Styrofoam installed over Housewrap. Roof to be 5/12 or 6/12 and decked with OSB-TechShield.**

**“Smart Framing” techniques are to be used, including studs and rafters stacked 24” on center, California corners, Ladder Tees, single 2 X 4 Interior door headers and 2 X 6 Exterior door and window headers.**

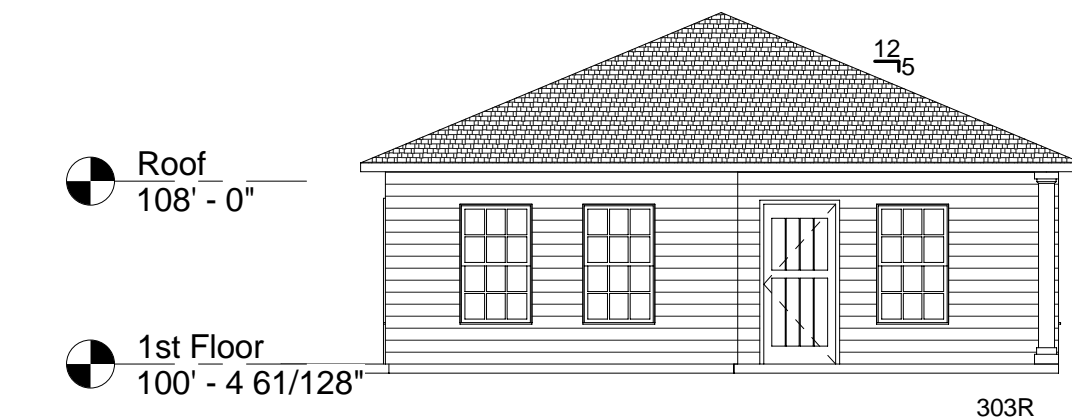
**Also, please quote a Per/SF cost to install 8¼“ Hardie Board siding.**

**There will be a \$200.00 Nail allowance.**

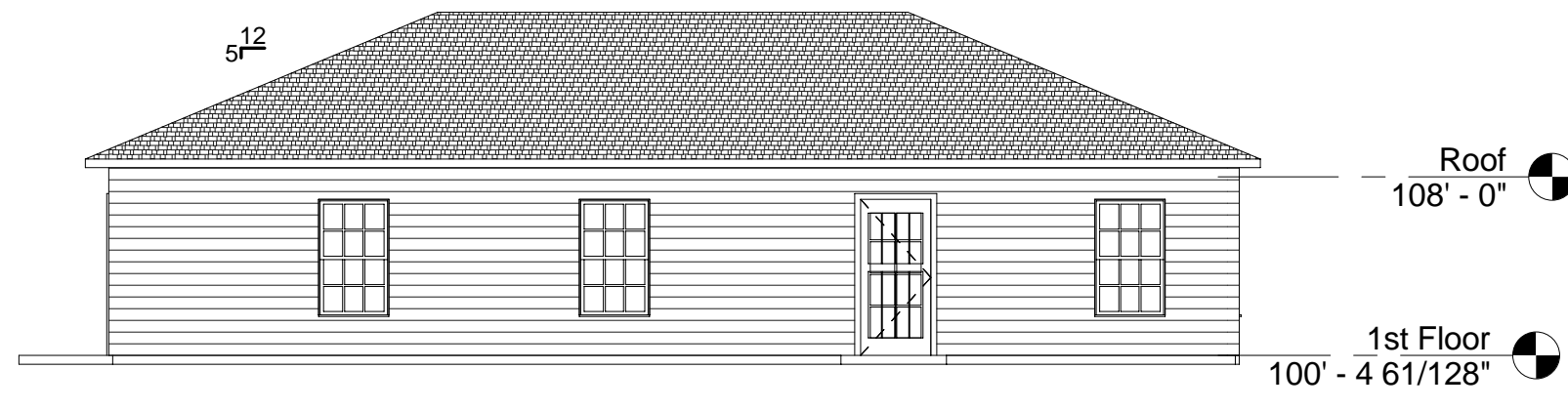
**Work to be performed must conform to all applicable local, state and federal codes and restrictions.**

**To be considered, your bid must include a completed Company Profile Form, a copy of General Liability Insurance, Workers Comp. Insurance, and Comprehensive Subcontractor Agreement.**

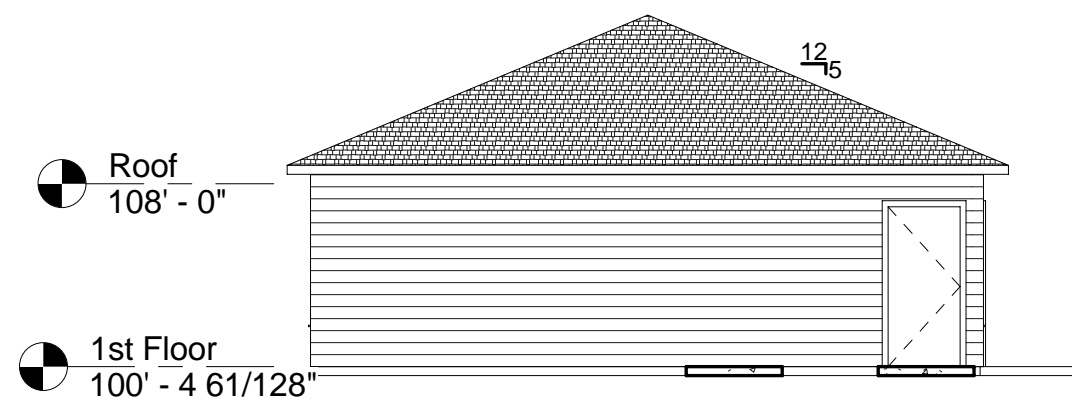
**The successful bidder must agree to conform to Habitat’s tight build schedule.**



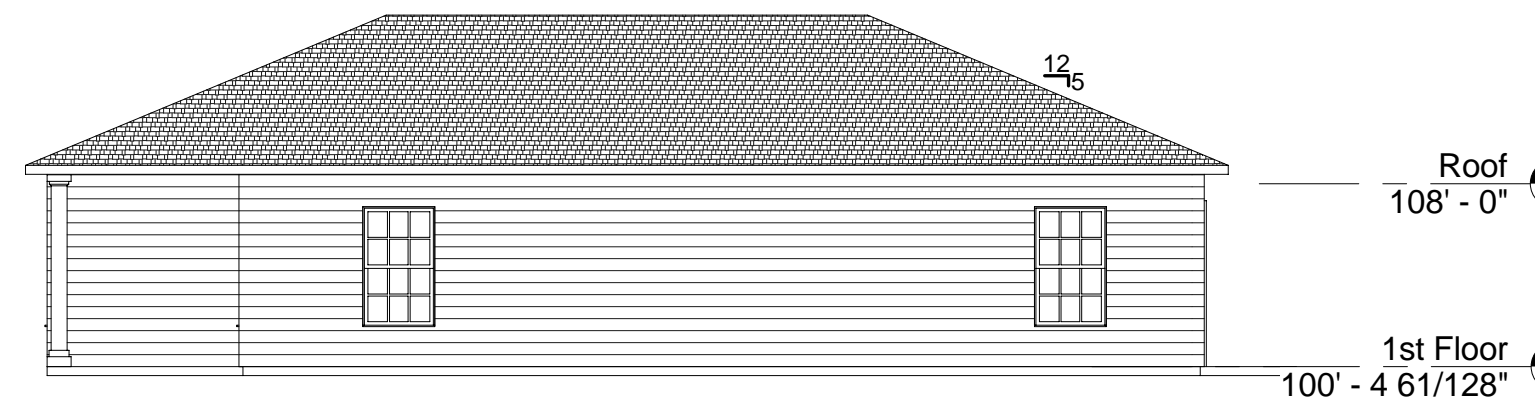
2 FRONT ELEVATION  
1/8" = 1'-0"



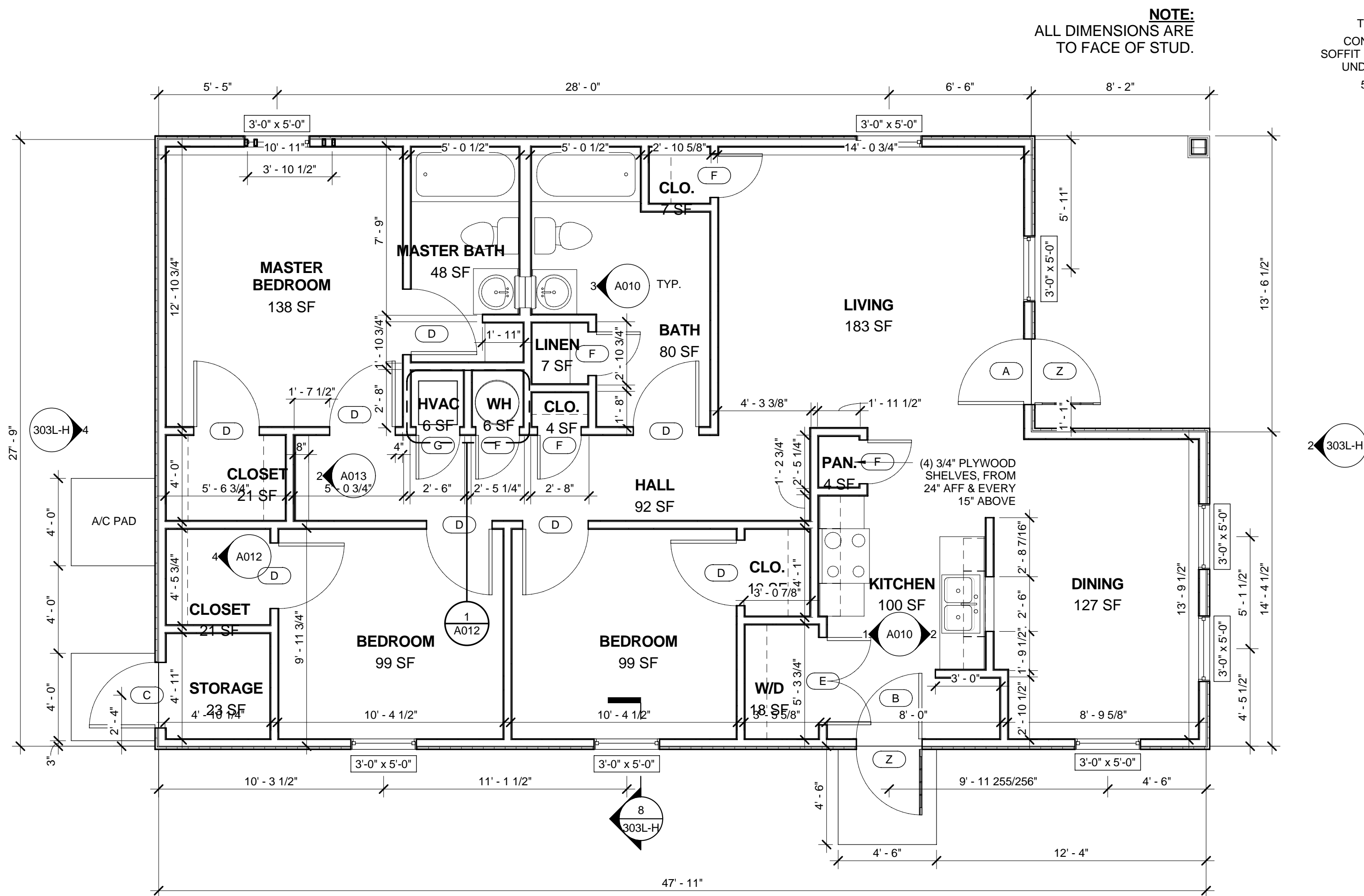
3 LEFT ELEVATION  
1/8" = 1'-0"



4 REAR ELEVATION  
1/8" = 1'-0"

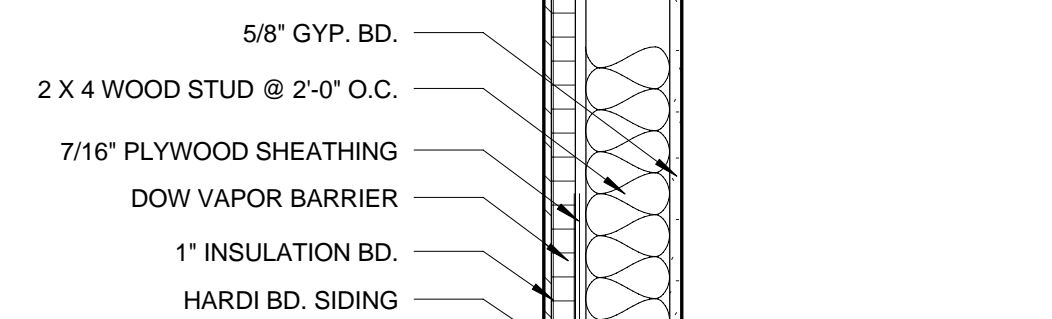
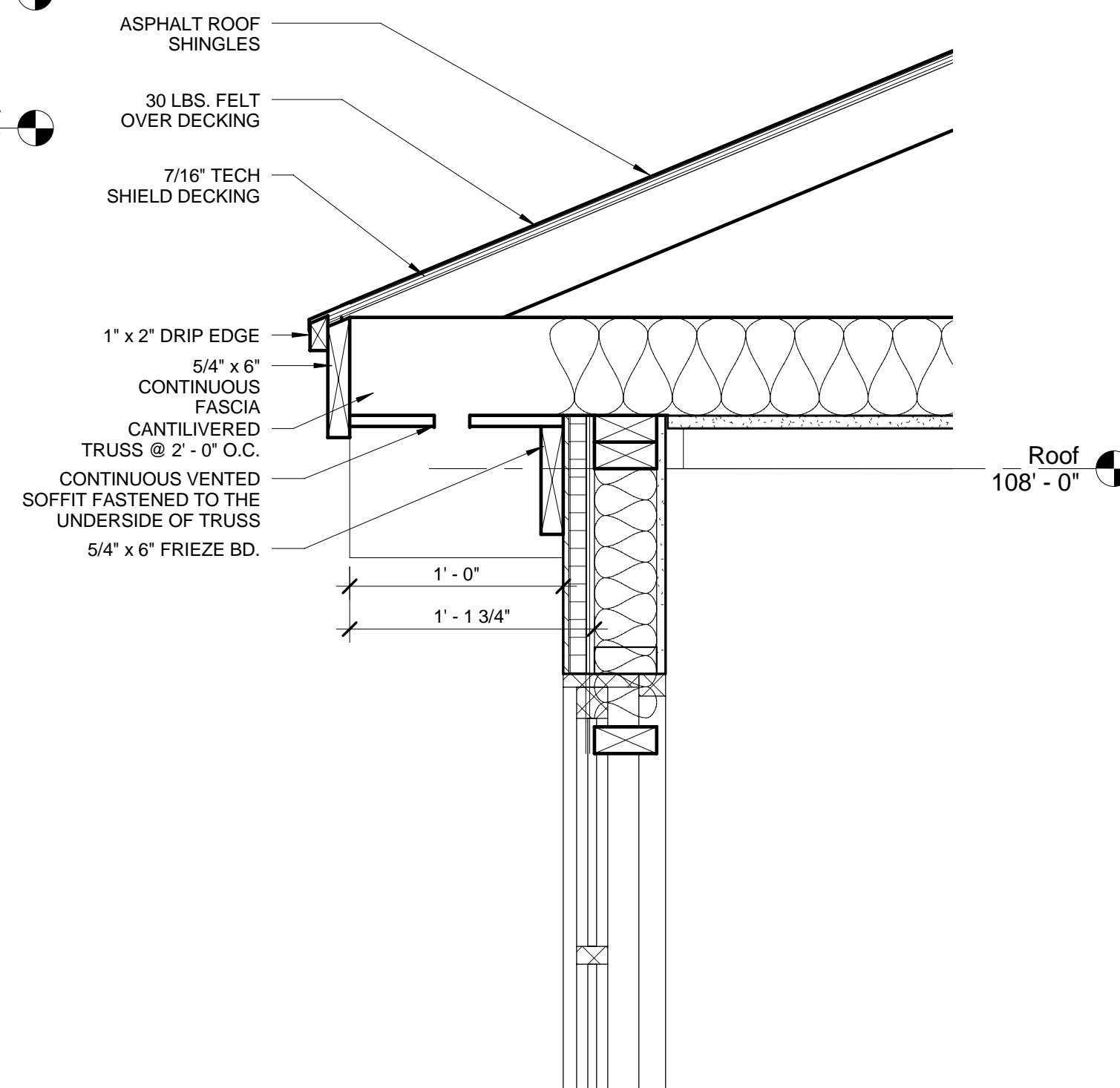
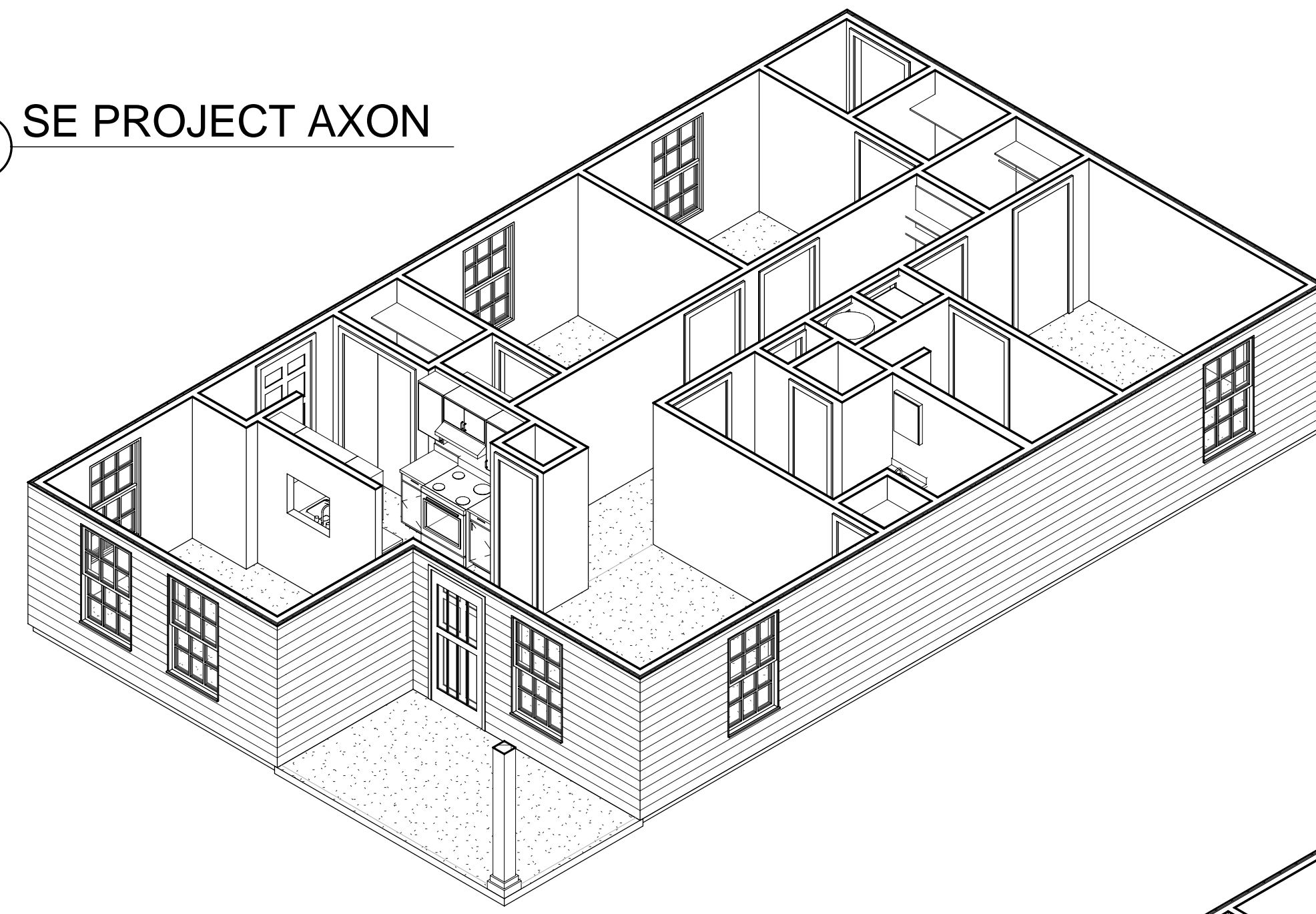


5 RIGHT ELEVATION  
1/8" = 1'-0"

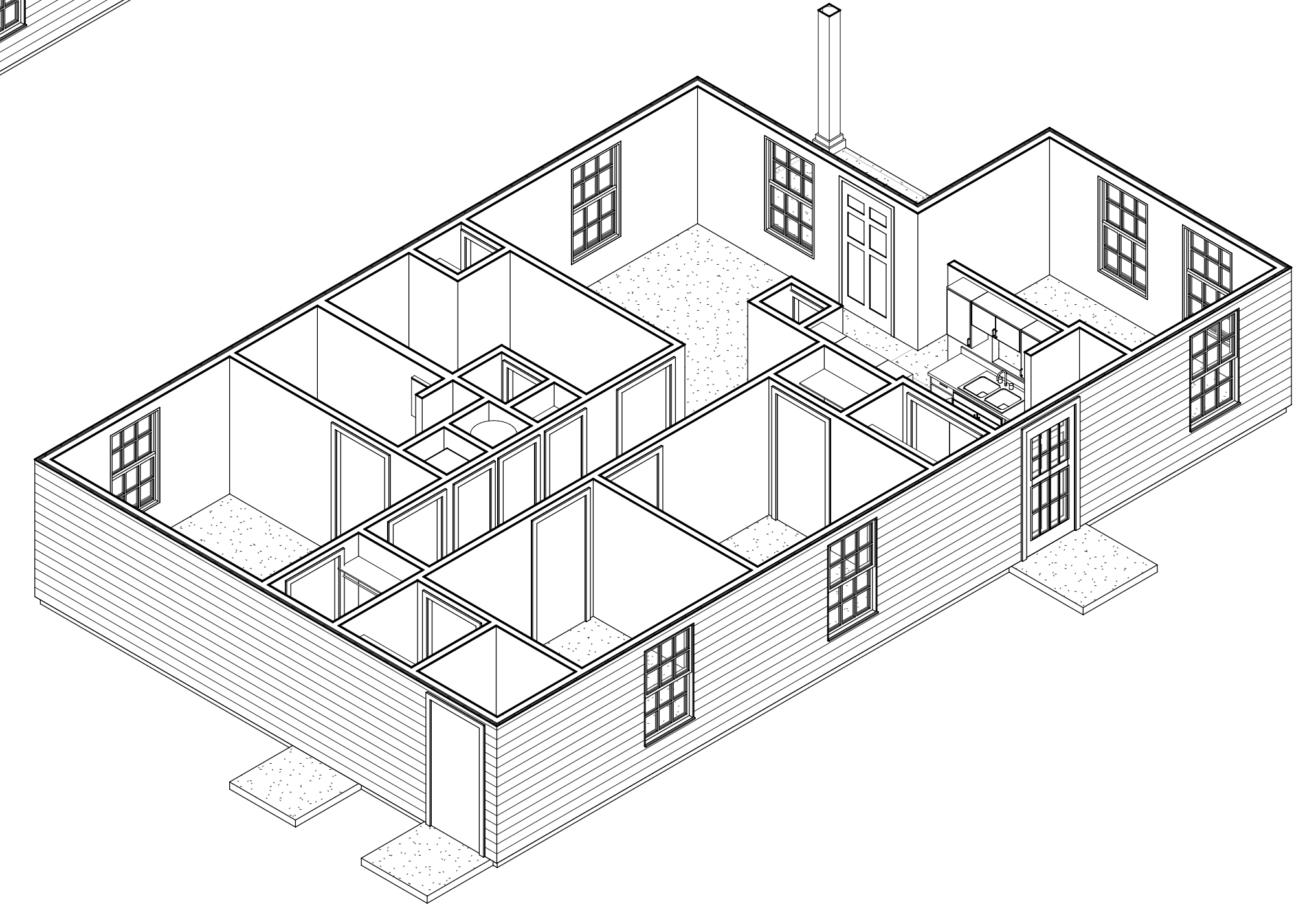


1 FLOOR PLAN 303L  
1/4" = 1'-0"

6 SE PROJECT AXON



7 NW PROJECT AXON



DOOR SCHEDULE					
Door Mark	Width	Height	Thickness	Material	Remarks
A	3'-0"	6'-8"	1 3/4"	MTL	6-PNL DB/ Peep Steel
B	3'-0"	6'-8"	1 3/4"	MTL	9LT/2pan GBG/ DB Steel
C	3'-0"	6'-8"	1 3/4"	MTL	DB Steel W/ Edge Outswing
D	3'-0"	6'-8"	1 3/4"	H/C	
E	4'-0"	6'-8"	1 1/2"	H/C	Pair 2'-0"
F	2'-0"	6'-8"	1 1/2"	H/C	
G	2'-0"	6'-8"	1 1/2"	H/C	Sealed furnace
Z	3'-0"	6'-8"	1 1/2"	MTL	Iron & Full Glass DB Security Door

AREA SCHEDULE	
HEATED (NET)	1070 SF
PORCH	101 SF
STORAGE	23 SF
WALLS	161 SF
TOTAL (GROSS)	1355 SF

NET AREA SCHEDULE		
Room Type	Count	Area
Bath	2	128 SF
Bedroom	3	335 SF
Closet	5	65 SF
Dining	1	127 SF
Hall	1	92 SF
HVAC	1	6 SF
Kitchen	1	100 SF
Linen	1	7 SF
Living	1	183 SF
Partry	1	4 SF
W/D	1	18 SF
WH	1	6 SF
		1071 SF

8 WALL SECTION  
1 1/2" = 1'-0"

REV. NO.	DATE	DESCRIPTION
		DESIGN DOCUMENTS

PERSHING 3 BEDROOM PLAN  
MEMPHIS, TN

SHEET TITLE: 303 HOUSE

DRAWN: JD  
CHECKED: GW  
PROJECT NUMBER: 303

DATE: 03-02-2009  
SHEET NO: 303L-H

© 2009 HABITAT FOR HUMANITY MEMPHIS INC.