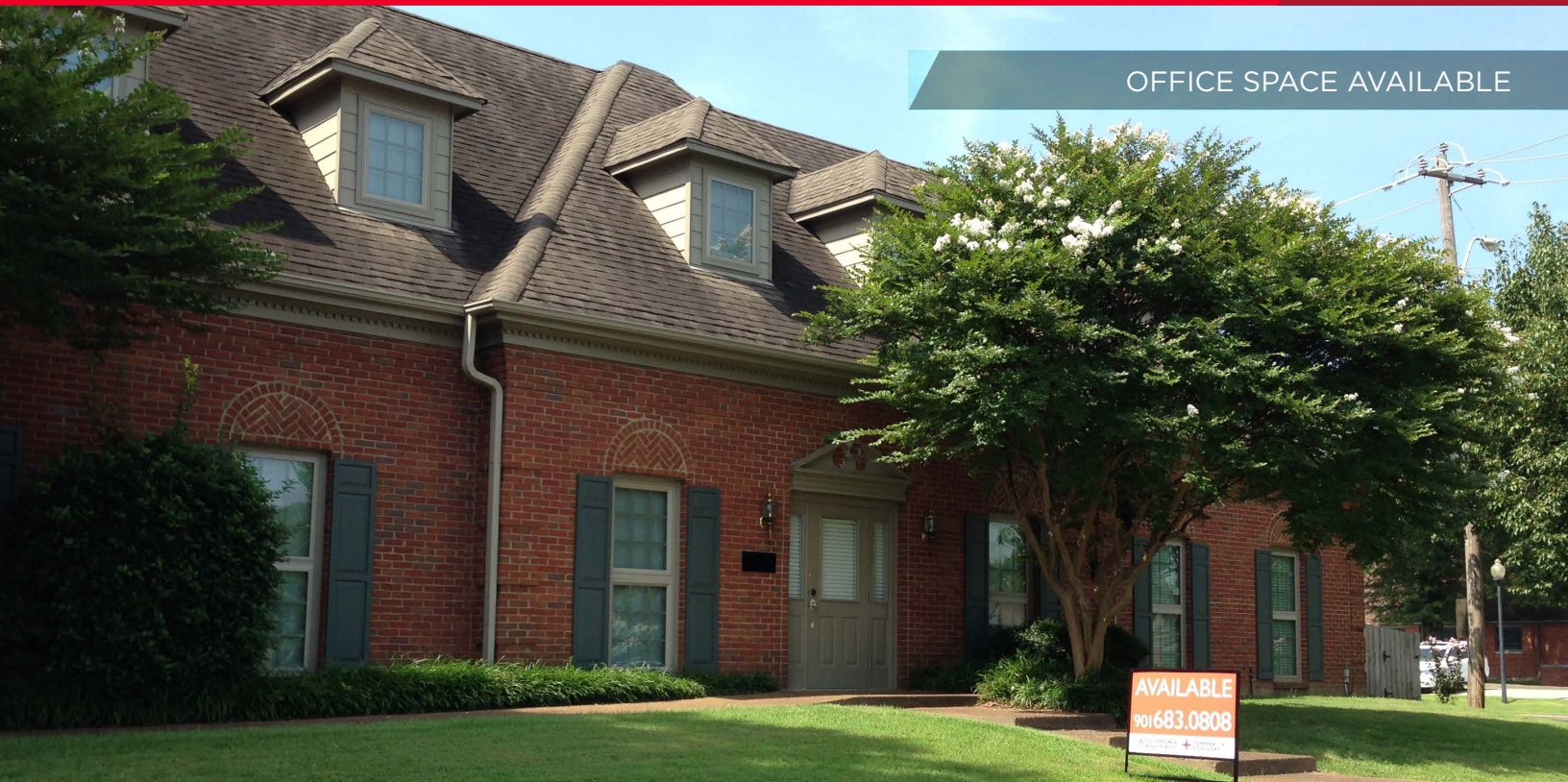




AVAILABLE

Stage Oaks Office Buildings

6555 Stage Road & 6551 Stage Oaks Drive
Bartlett, TN / Northeast Submarket



OFFICE SPACE AVAILABLE

3,703 SF Available

Property Features

- 3,703 SF available
- Two residential style office buildings
- Rate: \$14 PSF modified gross
- Approximately 1/2 mile to Hwy 70 and approximately 7 minutes to I-40
- Close proximity to retail, banking, and restaurants
- Great parking with easy access to the building



Conner Walker
Vice President
901 362 9862
cwalker@commadv.com

Owen Mercer
Associate
901 273 2343
omercer@commadv.com

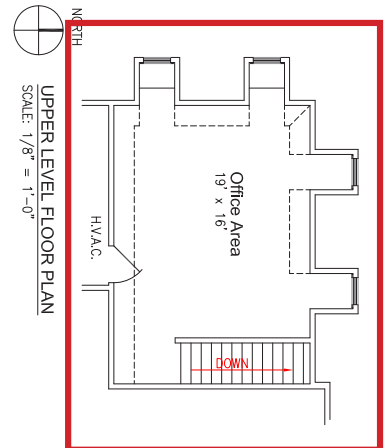
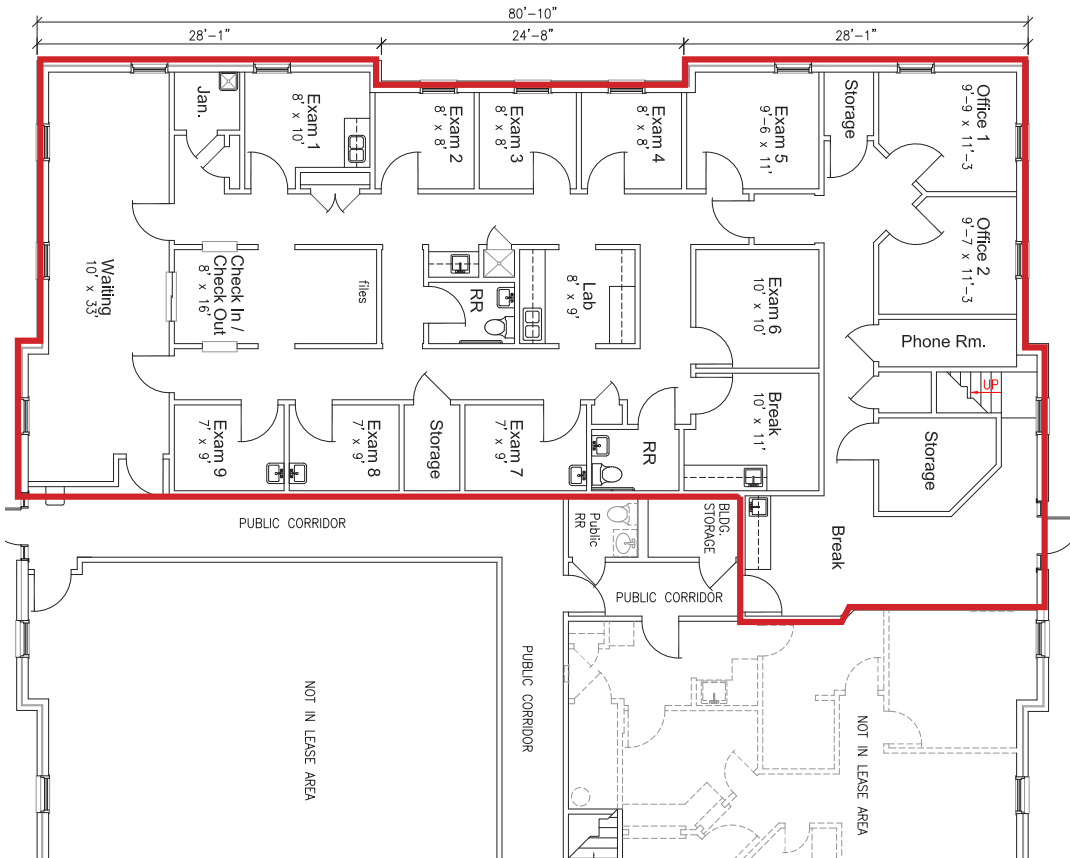
5101 Wheelis Drive, Suite 320
Memphis, TN 38117
Main: 901 683 0808
www.commadv.com

Independently Owned and Operated / A Member of the Cushman & Wakefield Alliance

Cushman & Wakefield Copyright 2015. No warranty or representation, express or implied, is made to the accuracy or completeness of the information contained herein, and same is submitted subject to errors, omissions, change of price, rental or other conditions, withdrawal without notice, and to any special listing conditions imposed by the property owner(s). As applicable, we make no representation as to the condition of the property (or properties) in question.

Stage Oaks Office Buildings

6555 Stage Road & 6551 Stage Oaks Drive
Bartlett, TN / Northeast Submarket



Conner Walker
Vice President
901 362 9862
cwalker@commadv.com

Owen Mercer
Associate
901 273 2343
omercer@commadv.com

5101 Wheelis Drive, Suite 320
Memphis, TN 38117
Main: 901 683 0808
www.commadv.com

Independently Owned and Operated / A Member of the Cushman & Wakefield Alliance

Cushman & Wakefield Copyright 2015. No warranty or representation, express or implied, is made to the accuracy or completeness of the information contained herein, and same is submitted subject to errors, omissions, change of price, rental or other conditions, withdrawal without notice, and to any special listing conditions imposed by the property owner(s). As applicable, we make no representation as to the condition of the property (or properties) in question.